



Price
£350,000

Freehold

3x  1x  1x 

**Faversham Road,
Seasalter, Whitstable,
Kent, CT5**

OVER 60?

Secure this property
for up to **59% less!**

Wards
Helping you move forwards



Main features

- Bright, open plan living accommodation
- Ample parking for several cars and garage
- Useful separate utility area
- Beautiful rear deck to enjoy evening sunsets
- Recently installed stylish shower room

Accommodation

GROUND FLOOR

Entrance Hall

Porch: 14'3 x 4'8 (4.35m x 1.42m)

Lounge: 15'10 x 11'8 (4.83m x 3.56m)

Dining Area: 24'9 x 8'10 (7.55m x 2.69m)

Kitchen: 12'7 x 5'11 (3.84m x 1.80m)

Utility Area

Shower Room

Bedroom 2 : 9'7 x 7'9 (2.92m x 2.36m)

Bedroom 3 : 9'7 x 6'1 (2.92m x 1.86m)

FIRST FLOOR

Bedroom 1 : 16'1 x 7'10 (4.91m x 2.39m)

OUTSIDE

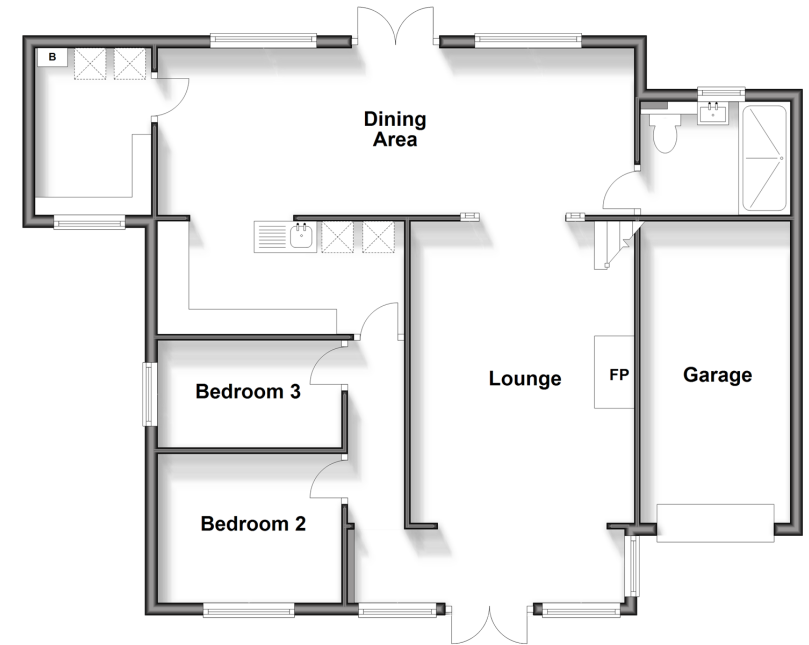
Driveway

Decking

Garage

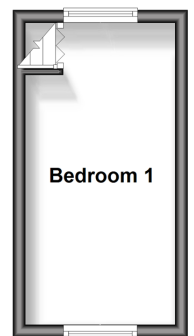
Split Level Ground Floor

Approx. 88.3 sq. metres (950.9 sq. feet)



First Floor

Approx. 11.5 sq. metres (123.5 sq. feet)



Call Whitstable - 01227 772272 ■ wardsofkent.co.uk

- Legal advice should be taken to verify fixtures/fittings, planning, alterations and/or lease details
- Appliances & services are untested, dimensions are approximate and floor plans are not to scale
- Through a Homewise Home For Life Plan people aged 60+ can secure this property for up to 59% less, by purchasing a Lifetime Lease.



12033440/20240406/AR/NF