



**Price**  
**£350,000**

**Freehold**

3x  1x  1x 

**Courtfield Avenue,  
Lordswood, Chatham,  
Kent, ME5**

**OVER 60?**

Secure this property  
for up to **59% less!**

*Wards*  
Helping you move forwards



## Main features

- Super impressive family home which has been finished to a high standard
- Garage has been converted into a dining room
- Utility room and cloakroom
- Versatile log cabin home/office
- Close to amenities

## Accommodation

### GROUND FLOOR

Entrance Hallway  
 Dining Room with Sky light : 15'7 x 9'3  
 (4.75m x 2.82m)  
 Kitchen : 11'3 x 7'7 (3.43m x 2.31m)  
 Downstairs Cloakroom  
 Utility Room  
 Lounge : 18'2 x 10'1 (5.54m x 3.08m)

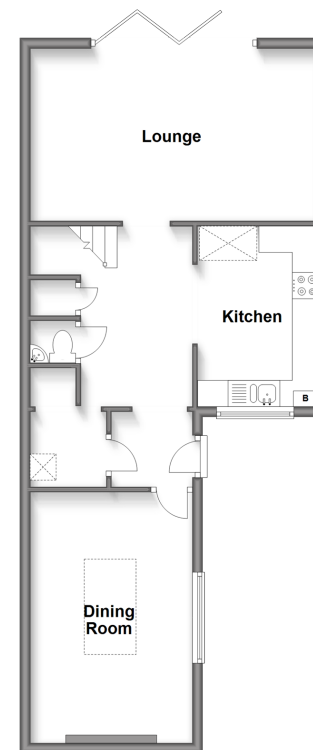
### FIRST FLOOR

Landing  
 Bedroom 1: 12'9 x 9'4 (3.89m x 2.85m)  
 Bedroom 2 : 10'2 x 8'8 (3.10m x 2.64m)  
 Bedroom 3 : 9'1 x 8'8 (2.77m x 2.64m)  
 Bathroom : 8'4 x 5'9 (2.54m x 1.75m)

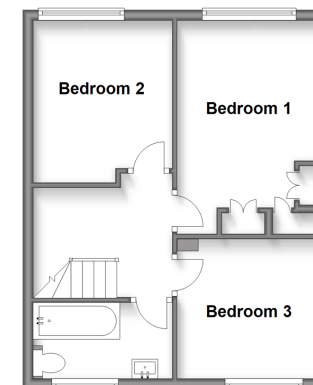
### OUTSIDE

Driveway  
 Rear Garden  
 Log Cabin Bi-fold doors

**Ground Floor**  
 Approx. 58.0 sq. metres (624.3 sq. feet)



**First Floor**  
 Approx. 37.9 sq. metres (408.2 sq. feet)



**Call Walderslade - 01634 865661 ■ [wardsof Kent.co.uk](http://wardsof Kent.co.uk)**

- Legal advice should be taken to verify fixtures/fittings, planning, alterations and/or lease details
- Appliances & services are untested, dimensions are approximate and floor plans are not to scale
- Through a Homewise Home For Life Plan people aged 60+ can secure this property for up to 59% less, by purchasing a Lifetime Lease.



12131109/20240207/ML/KG