



OVER 60?

Secure this property
for up to **59% less!**

Price

£550,000

Freehold

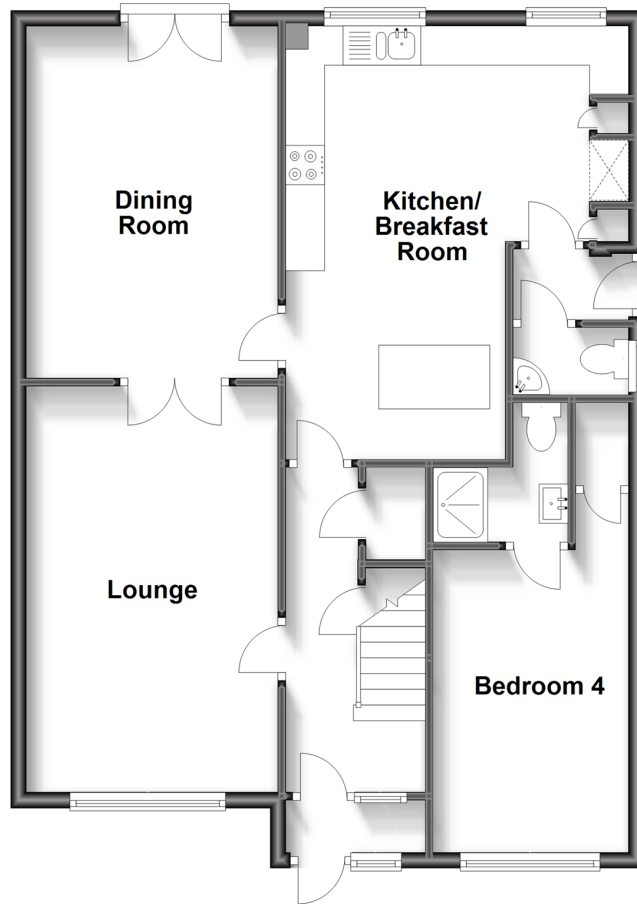
4x  2x  1x 

**Robin Hood Lane,
Walderslade, Chatham,
Kent, ME5**

Wards
Helping you move forwards

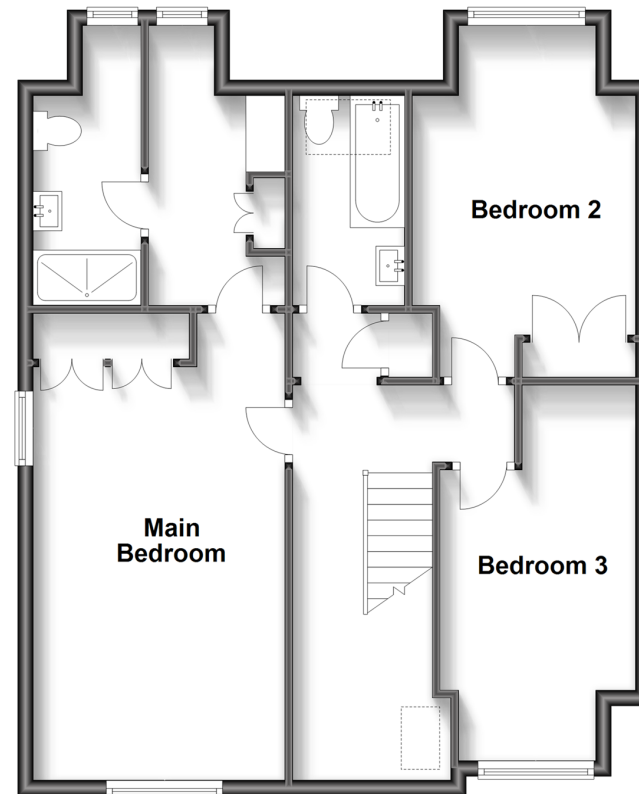
Ground Floor

Approx. 78.9 sq. metres (849.0 sq. feet)



First Floor

Approx. 69.5 sq. metres (747.9 sq. feet)



Accommodation

ENTRANCE HALLWAY

Bedroom 4 : 12'6 x 8'2 (3.81m x 2.49m)

En Suite Shower

Kitchen/Breakfast Room : 18'0 x 14'5 (5.49m x 4.40m)

Dining Room: 14'7 x 10'5 (4.45m x 3.18m)

Lounge : 16'9 x 10'6 (5.11m x 3.20m)

Cloakroom

En suite : 11'8 x 4'4 (3.56m x 1.32m)

Bedroom 2: 15'1 x 9'4 (4.60m x 2.85m)

Bedroom 3: 13'9 x 8'5 (4.19m x 2.57m)

Family Bathroom

OUTSIDE

Rear Garden

Front Garden

Driveway for several cars

FIRST FLOOR LANDING

Main Bedroom : 19'4 x 10'5 (5.90m x 3.18m)

Dressing Area : 11'9 x 5'8 (3.58m x 1.73m)



Main features

- Spacious family home in a sought after location with easy links to the M2/M20 motorway
- Versatile and flexible layout with two en suites and a dressing room to the main bedroom
- Downstairs cloakroom
- Recently fitted kitchen/breakfast room
- Ample parking and a manageable rear garden



Nearest Schools

Primary Schools: Tunbury Primary 0.2 miles, Walderslade Primary 0.7 miles, Oaklands Junior School 0.9 miles

Secondary Schools: Greenacre School 1.1 miles, Walderslade Girls' School 1.2 miles, Bradfields School 1.5



Transport Information

Train Stations: Snodland 2.9 miles, New Hythe 2.9 miles, Aylesford 3.1 miles



Address

Robin Hood Lane, Walderslade, Chatham, Kent, ME5



Directions

For directions to this property please contact us.



Call Walderslade Branch 01634 865661 ■ wardsofkent.co.uk



- Legal advice should be taken to verify fixtures/fittings, planning, alterations and/or lease details
- Through a Homewise Home For Life Plan people aged 60+ can secure this property for up to 59% less, by purchasing a Lifetime Lease.
- Appliances & services are untested, dimensions are approximate and floor plans are not to scale



12133584/20230713/ML/KG