



Guide Price
£220,000

Freehold

2x  1x  1x 

**Savage Road,
Lordswood, Chatham,
Kent, ME5**

OVER 60?

Secure this property
for up to **59% less!**

Wards
Helping you move forwards



Main features

- Great semi detached home perfect for a first time buy
- Open plan living arrangement
- Popular Colonial style build
- Garage en bloc
- Short walk to local shops and amenities

Accommodation

GROUND FLOOR

Lounge : 15'9 x 11'6 (4.80m x 3.51m)

Kitchen : 8'1 x 5'0 (2.47m x 1.53m)

FIRST FLOOR

Landing

Bedroom 1 : 11'6 x 8'1 (3.51m x 2.47m)

Bedroom 2 : 8'8 x 8'3 (2.64m x 2.52m)

Bathroom : 5'9 x 5'4 (1.75m x 1.63m)

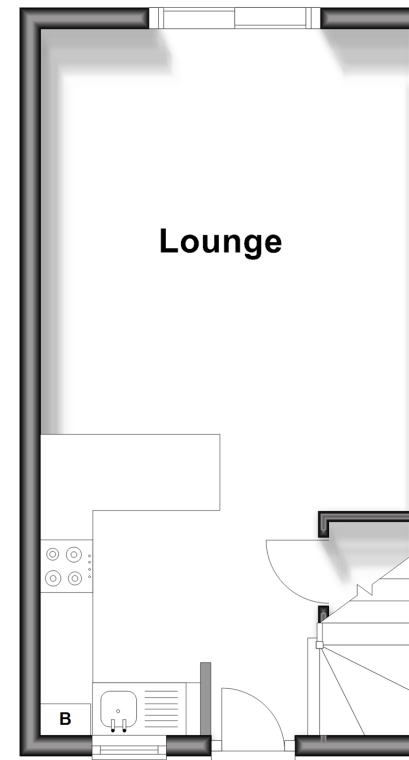
OUTSIDE

Rear Garden

Garage en bloc

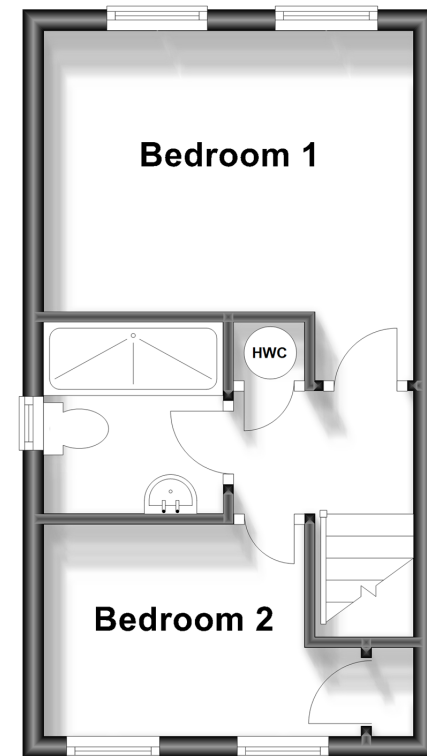
Ground Floor

Approx. 255.5 sq. feet



First Floor

Approx. 255.5 sq. feet



Call Walderslade - 01634 865661 ■ wardsof Kent.co.uk

- Legal advice should be taken to verify fixtures/fittings, planning, alterations and/or lease details
- Appliances & services are untested, dimensions are approximate and floor plans are not to scale
- Through a Homewise Home For Life Plan people aged 60+ can secure this property for up to 59% less, by purchasing a Lifetime Lease.



12136812/20231128/ML/SB