

OVER 60?

Secure this property
for up to **59% less!**



Price

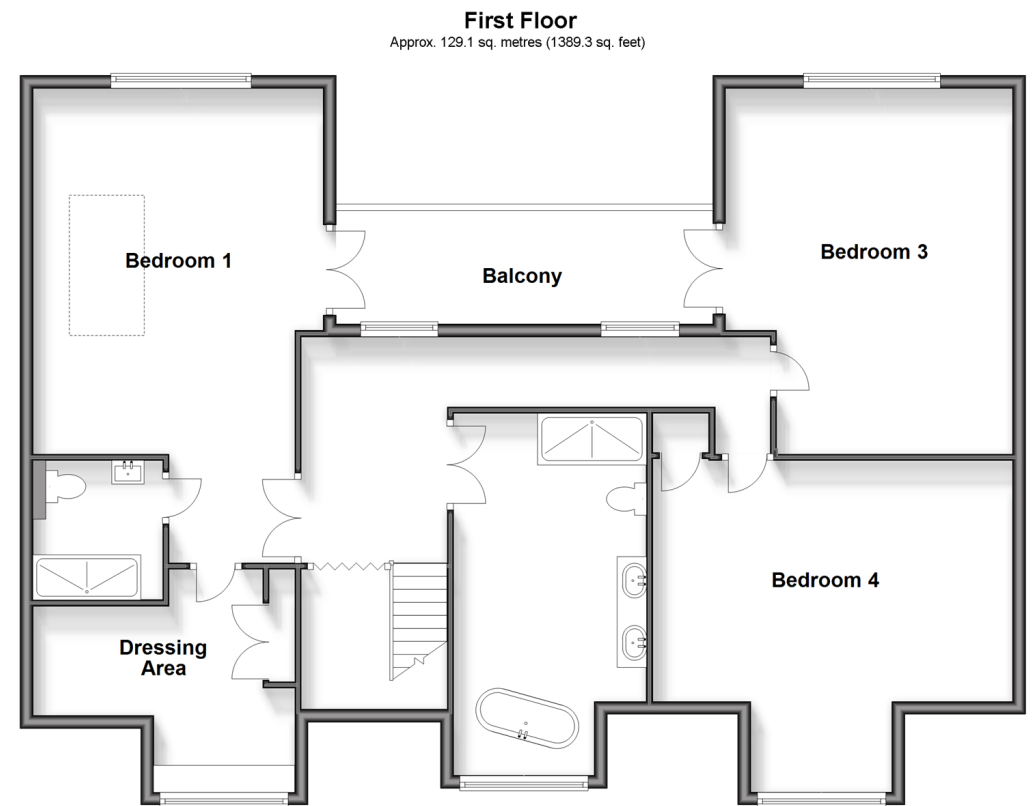
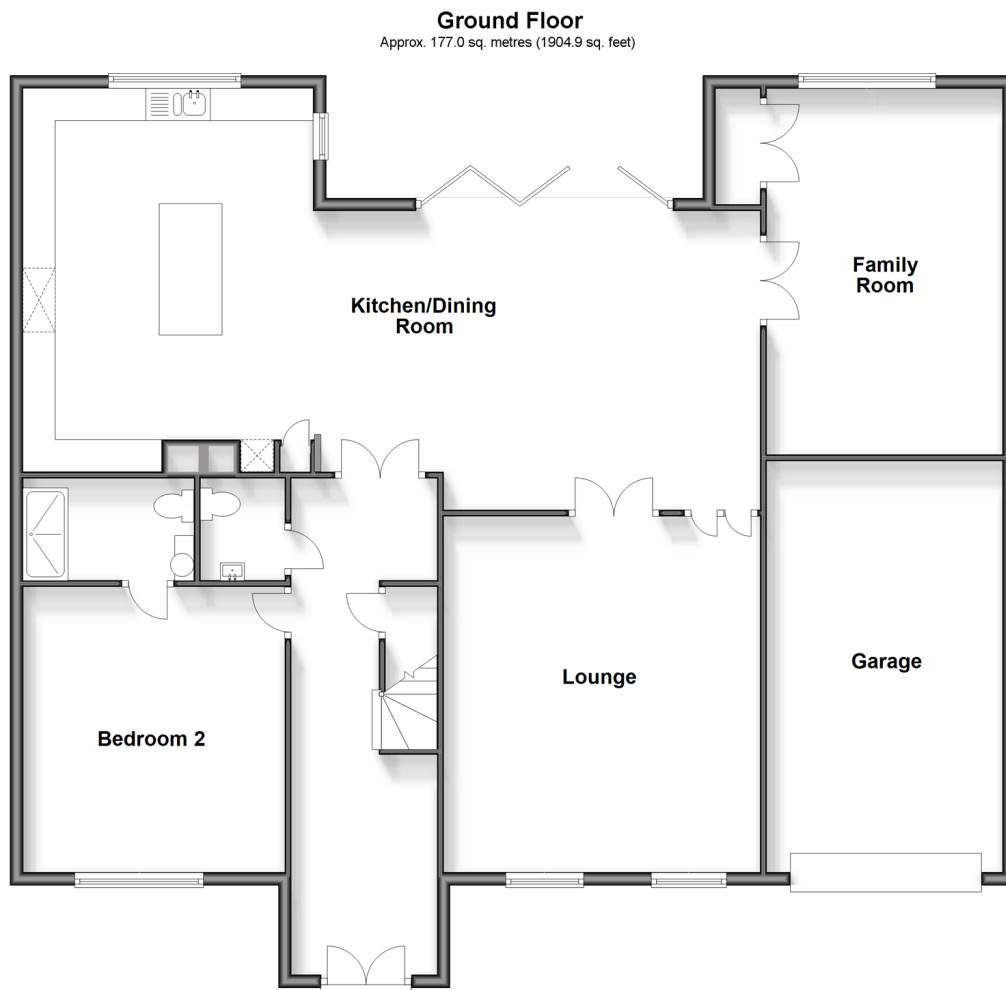
£900,000

Freehold

5x  3x  3x 

Robin Hood Lane, Bluebell Hill Village,
Chatham, Kent, ME5

Wards
Helping you move forwards



Accommodation

GROUND FLOOR

Large Entrance Hallway

Lounge : 18'0 x 15'9 (5.49m x 4.80m)

Bedroom 2: 14'5 x 13'3 (4.40m x 4.04m)

En suite : 8'6 x 5'2 (2.59m x 1.58m)

Cloakroom

Kitchen/Dining Room : 37'4 x 16'3 (11.39m x 4.96m)

Family Room : 18'6 x 11'9 (5.64m x 3.58m)

FIRST FLOOR

Spacious Landing

Bathroom : 18'4 x 9'9 (5.59m x 2.97m)

Bedroom 1 : 23'7 x 14'8 (7.19m x 4.47m)

En suite : 7'1 x 6'4 (2.16m x 1.93m)

Dressing Area : 13'3 x 11'4 (4.04m x 3.46m)

Balcony

Bedroom 3: 19'7 x 14'6 (5.97m x 4.42m)

Bedroom 4: 18'4 x 16'1 (5.59m x 4.91m)

OUTSIDE

Annexe

Kitchen

Lounge

Bathroom

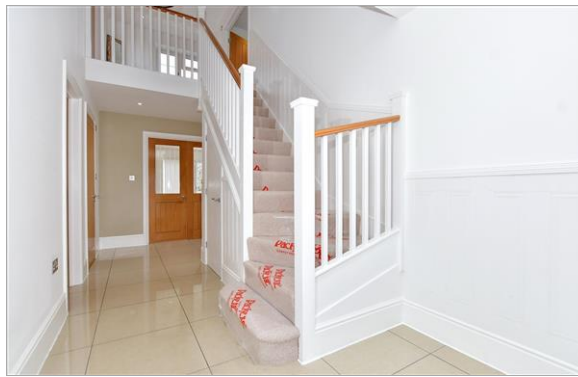
OUTSIDE

Large Driveway

Garage

Front Garden

Rear Garden



Main features

- Executive detached home in a sought after location
- Large outbuilding with all facilities for an Annexe
- En suites to two bedrooms and downstairs cloakroom
- Garage and driveway with electric gates for multiple cars
- Easy access to M2/M20 motorways



Nearest Schools

Primary Schools: Tunbury Primary 0.5 miles, Walderslade Primary 1.0 miles, Oaklands Junior School 1.1 miles

Secondary Schools: Greenacre School 1.3 miles, Walderslade Girls' School 1.4 miles, Bradfields School 1.7



Transport Information

Train Stations: Snodland 2.6 miles, New Hythe 2.7 miles, Aylesford 2.9 miles



Address

Robin Hood Lane, Bluebell Hill Village, Chatham, Kent, ME5



Directions

For directions to this property please contact us.



Wards
Helping you move forwards

Call Walderslade Branch 01634 865661 ■ wardsofkent.co.uk



■ Legal advice should be taken to verify fixtures/fittings, planning, alterations and/or lease details ■ Appliances & services are untested, dimensions are approximate and floor plans are not to scale
■ Through a Homewise Home For Life Plan people aged 60+ can secure this property for up to 59% less, by purchasing a Lifetime Lease.



12137099/20240118/ML/SB