



Price
£270,000

Freehold

3x  1x  1x 

**Camden Close, Lords
Wood, Chatham, Kent,
ME5**

OVER 60?

Secure this property
for up to **59% less!**

Wards
Helping you move forwards



Main features

- Spacious family home in a quiet location
- With a very handy downstairs cloakroom
- Situated in a cul-de-sac position
- Private wrap around rear garden
- Easy access to the motorway links

Accommodation

GROUND FLOOR

Hallway

Lounge: 15'9 x 11'3 (4.80m x 3.43m)

Kitchen/Diner: 17'8 x 9'6 (5.39m x 2.90m)

Downstairs Cloakroom

FIRST FLOOR

Landing

Bedroom 1: 14'0 x 9'4 (4.27m x 2.85m)

Bedroom 2: 15'3 x 8'3 (4.65m x 2.52m)

Bedroom 3: 9'6 x 7'3 (2.90m x 2.21m)

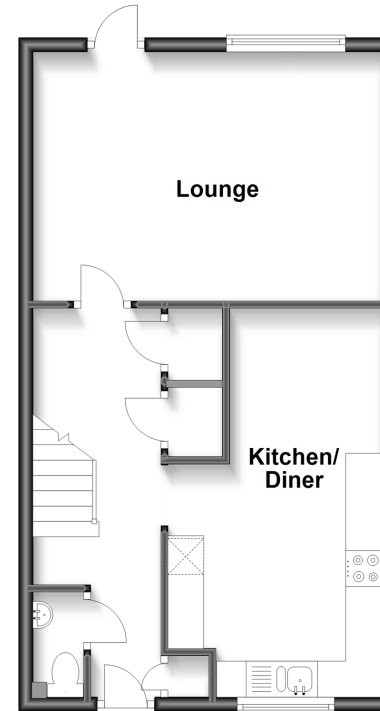
Bathroom: 6'2 x 6'1 (1.88m x 1.86m)

OUTSIDE

Front and Rear Garden

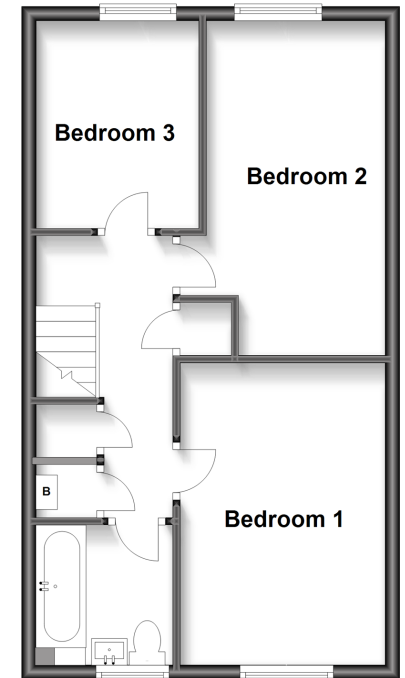
Ground Floor

Approx. 43.7 sq. metres (470.9 sq. feet)



First Floor

Approx. 43.7 sq. metres (470.9 sq. feet)



Call Walderslade - 01634 865661 ■ wardsof Kent.co.uk

- Legal advice should be taken to verify fixtures/fittings, planning, alterations and/or lease details
- Appliances & services are untested, dimensions are approximate and floor plans are not to scale
- Through a Homewise Home For Life Plan people aged 60+ can secure this property for up to 59% less, by purchasing a Lifetime Lease.



12137944/20230814/ML/SB