



OVER 60?

Secure this property
for up to **59% less!**

Guide Price
£375,000

Leasehold

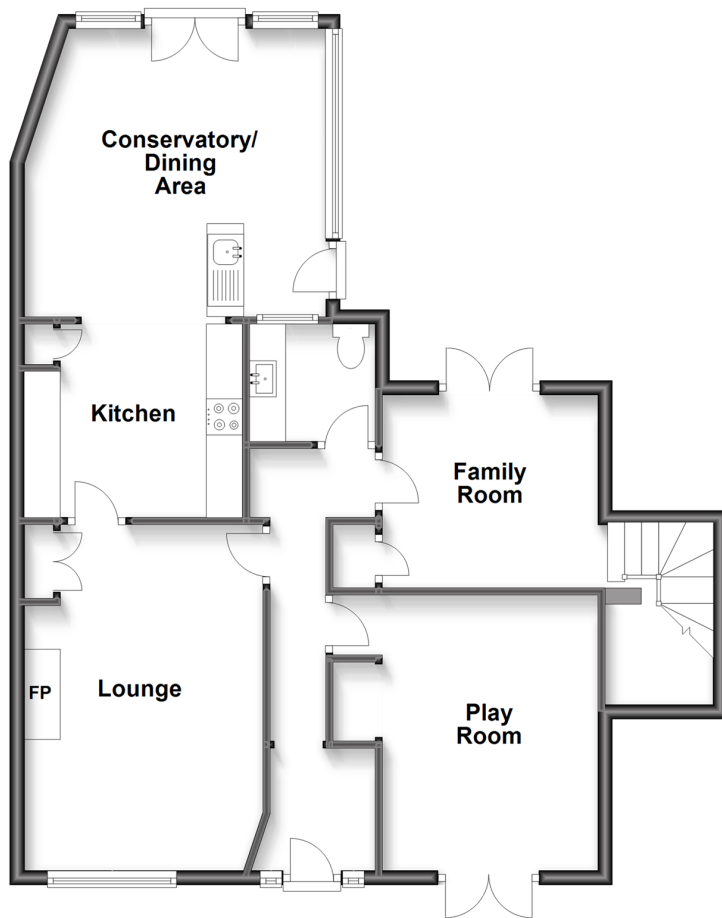
5x  2x  3x 

**Goad Avenue,
Walderslade, Chatham,
Kent, ME5**

Wards
Helping you move forwards

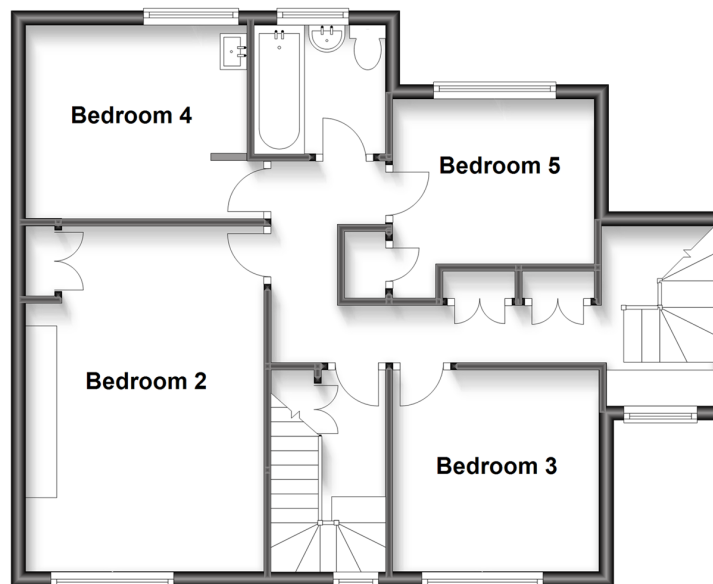
Ground Floor

Approx. 77.9 sq. metres (838.1 sq. feet)



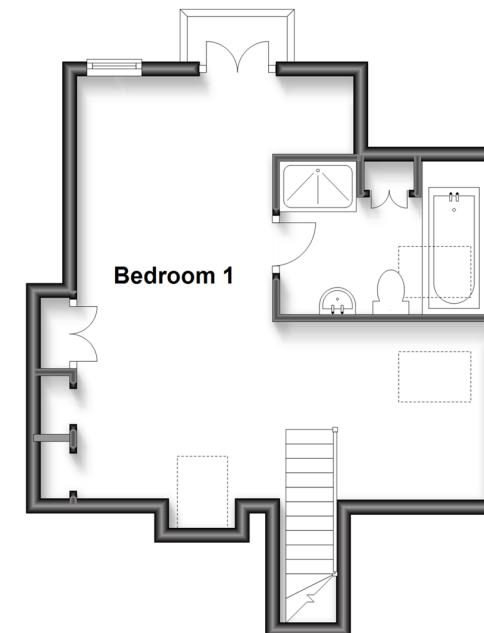
First Floor

Approx. 61.2 sq. metres (658.9 sq. feet)



Second Floor

Approx. 34.2 sq. metres (368.5 sq. feet)



Accommodation

GROUND FLOOR

Entrance Hall
 Lounge: 15'7 x 10'9 (4.75m x 3.28m)
 Conservatory/Dining Area: 13'7 x 12'6 (4.14m x 3.81m)
 Kitchen: 9'9 x 8'7 (2.97m x 2.62m)
 Cloakroom
 Family Room: 12'5 x 12'1 into recess (3.79m x 3.69m)
 Play Room: 11'9 x 10'0 (3.58m x 3.05m)

FIRST FLOOR

Landing
 Bedroom 4: 10'5 x 10'2 (3.18m x 3.10m)
 Family Bathroom: 5'9 x 5'5 (1.75m x 1.65m)
 Bedroom 3: 10'9 x 8'7 (3.28m x 2.62m)
 Bedroom 2: 15'4 x 10'9 (4.68m x 3.28m)
 Bedroom 5: 10'1 x 9'3 (3.08m x 2.82m)

SECOND FLOOR

Landing
 Bedroom 1: 20'0 x 13'4 (6.10m x 4.07m)
 En-Suite Bathroom

OUTSIDE

Front and Rear Garden



Main features

- A sizeable family home with versatile and flexible layout
- Ex naval estate
- En-suite bathroom to bedroom 1
- Handy conservatory adding to the living space currently used as a dining area
- No chain



Nearest Schools

Primary Schools: Lordswood Junior School 0.2 miles, Walderslade Primary 0.5 miles, St Benedict's RC Primary 0.7 miles. Secondary Schools: Walderslade Girls' School 1.9 miles, Greenacre School 2.0 miles, The Thomas Aveling School 2.0 miles.



Transport Information

Train Stations: Snodland 3.9 miles, Cuxton 3.9 miles, Strood 3.9 miles



Address

Goad Avenue, Walderslade, Chatham, Kent, ME5



Directions

For directions to this property please contact us.



Wards
Helping you move forwards

Call Walderslade Branch 01634 865661 ■ wardsofkent.co.uk



■ Legal advice should be taken to verify fixtures/fittings, planning, alterations and/or lease details ■ Appliances & services are untested, dimensions are approximate and floor plans are not to scale
■ Through a Homewise Home For Life Plan people aged 60+ can secure this property for up to 59% less, by purchasing a Lifetime Lease.



12143398/20240104/ML/KG