



OVER 60?

Secure this property
for up to **59% less!**

Price

£400,000

Freehold

4x  2x  2x 

**Gleaming Wood Drive,
Lords Wood, Chatham,
Kent, ME5**

Wards
Helping you move forwards



Main features

- Great size end of terrace home
- Potential to extend subject to planning
- Downstairs Cloakroom, en-suite to main bedroom and bathroom
- Garage en bloc
- Short drive to M2/M20 motorways

Accommodation

ENTRANCE PORCH

Lounge : 17'3 x 11'6 (5.26m x 3.51m)
 Dining Room: 15'9 x 10'0 (4.80m x 3.05m)
 Kitchen : 15'8 x 13'5 (4.78m x 4.09m)
 Utility Room : 8'5 x 6'1 (2.57m x 1.86m)
 Cloakroom

FIRST FLOOR LANDING

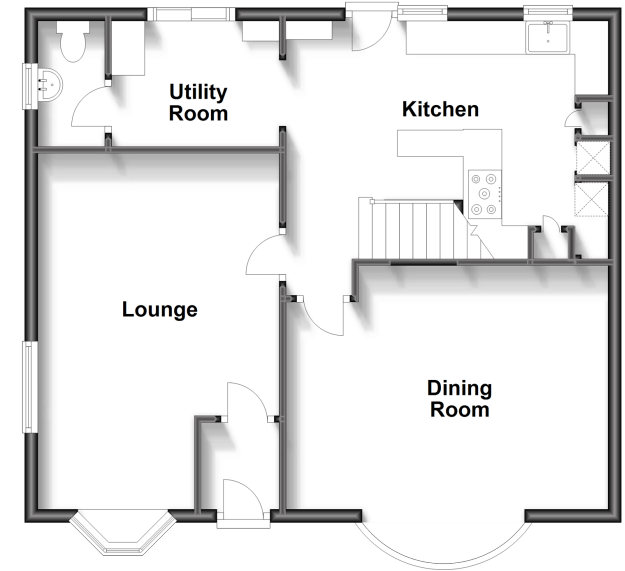
Bedroom 3: 8'4 x 8'4 (2.54m x 2.54m)
 Bathroom : 7'1 x 5'4 (2.16m x 1.63m)
 Bedroom 4 : 9'1 x 6'5 (2.77m x 1.96m)
 Bedroom 2: 9'0 x 9'0 (2.75m x 2.75m)
 Bedroom 1 : 18'1 x 11'7 (5.52m x 3.53m)
 En-suite : 8'5 x 5'3 (2.57m x 1.60m)
 Dressing Area : 5'7 x 2'8 (1.70m x 0.81m)

OUTSIDE

Front Garden
 Rear Garden
 Garage en bloc

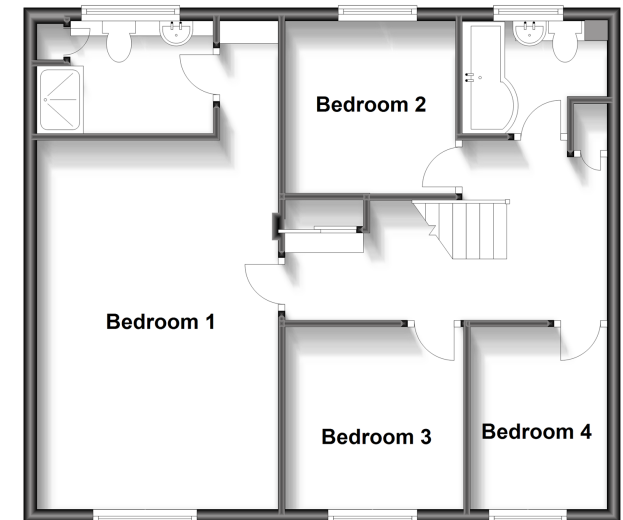
Ground Floor

Approx. 45.6 sq. metres (490.3 sq. feet)



First Floor

Approx. 63.0 sq. metres (677.7 sq. feet)



Call Walderslade - 01634 865661 ■ wardsof Kent.co.uk

- Legal advice should be taken to verify fixtures/fittings, planning, alterations and/or lease details
- Appliances & services are untested, dimensions are approximate and floor plans are not to scale
- Through a Homewise Home For Life Plan people aged 60+ can secure this property for up to 59% less, by purchasing a Lifetime Lease.



12143578/20240417/KG/SB