



Price

£160,000

Leasehold

1x  1x  1x 

**Woodlands Court,
Walderslade Road,
Walderslade, Chatham,
Kent, ME5**

OVER 60?

Secure this property
for up to **59% less!**



Video Tour available

Wards
Helping you move forwards



Main features

- A well kept property ready to be occupied
- Communal area
- Over 60's only with warden assistance
- Lift providing practicality
- No chain

Accommodation

From Communal Areas up to:

FIRST FLOOR

Entrance Hall

Lounge: 17'3 x 11'7 (5.26m x 3.53m)

Kitchen: 7'3 x 6'9 (2.21m x 2.06m)

Shower Room: 6'8 x 5'4 (2.03m x 1.63m)

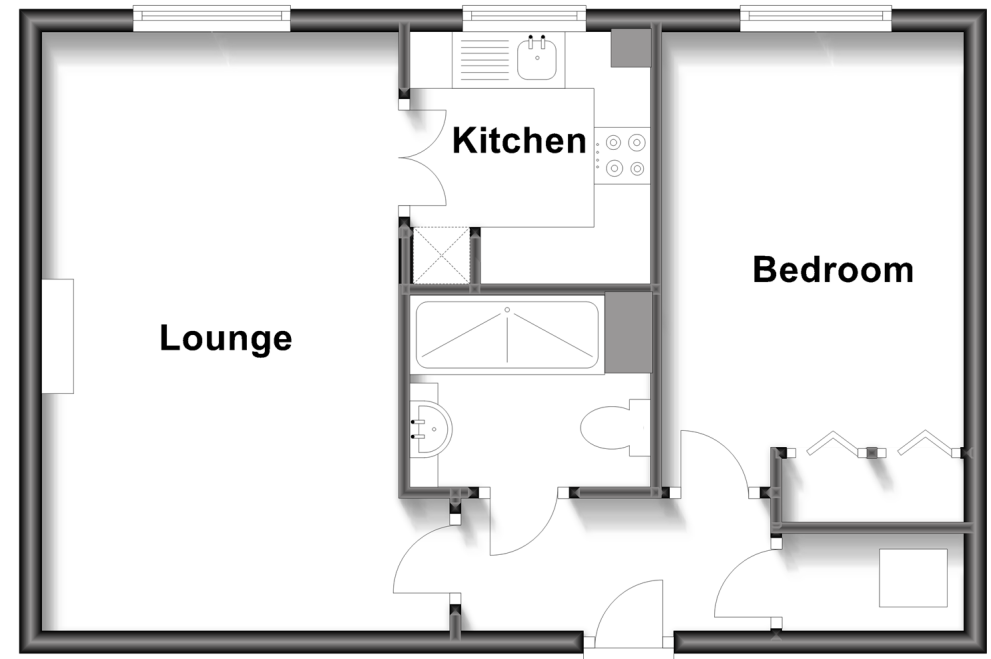
Bedroom: 13'2 x 8'8 (4.02m x 2.64m)

OUTSIDE

Communal Areas

First Floor

Approx. 43.2 sq. metres (464.7 sq. feet)



Call Walderslade - 01634 865661 ■ wardsofkent.co.uk

- Legal advice should be taken to verify fixtures/fittings, planning, alterations and/or lease details
- Through a Homewise Home For Life Plan people aged 60+ can secure this property for up to 59% less, by purchasing a Lifetime Lease.

- Appliances & services are untested, dimensions are approximate and floor plans are not to scale