



**OVER 60?**

You could get up to  
**59% off** the price!\*

**Price**

**£190,000**

**Leasehold**

1x  1x  1x 

**Woodlands Court,  
Walderslade Road,  
Walderslade, Chatham,  
Kent, ME5**

*Wards*  
Helping you move forwards





## Main features

- A retirement property in a village location
- Over 60's only
- Direct access to communal gardens
- Well presented throughout
- Lift access available and with no chain

## Accommodation

### FIRST FLOOR

#### Entrance Hall

**Bedroom** : 17'1 x 9'0 (5.21m x 2.75m)

**Lounge/Diner**: 24'8 x 10'7 at widest point (7.52m x 3.23m)

**Walk - in Shower Room**: 6'9 x 5'5 (2.06m x 1.65m)

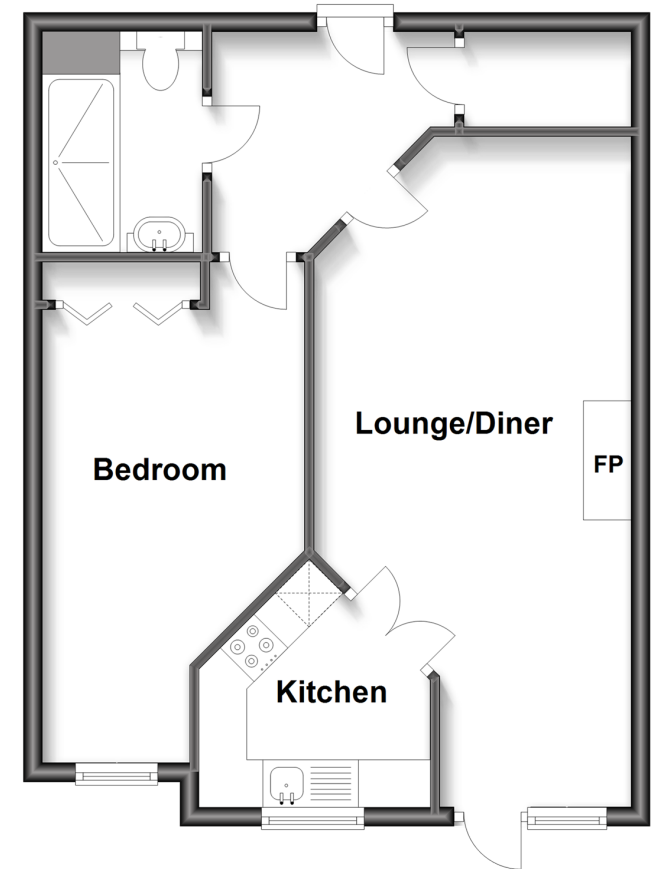
**Kitchen**: 8'3 x 7'5 (2.52m x 2.26m)

### OUTSIDE

#### Communal Garden Areas

## Second Floor

Approx. 49.4 sq. metres (531.7 sq. feet)



**Call Walderslade - 01634 865661 ■ [wardsof Kent.co.uk](http://wardsof Kent.co.uk)**

- Legal advice should be taken to verify fixtures/fittings, planning, alterations and/or lease details
- Appliances & services are untested, dimensions are approximate and floor plans are not to scale
- Our Homewise partnership offer a 'Home for Life' plan to buyers over 60, granting a lifetime lease for your protection and reducing the purchase price by up to 59%



12143634/20221013/STM/KG