



**Price**  
**£900,000**

**Freehold**

4x  2x  3x 

**Lords Wood Lane, Lords  
Wood, Chatham, Kent,  
ME5**

**OVER 60?**

You could get up to  
**59% off** the price!\*

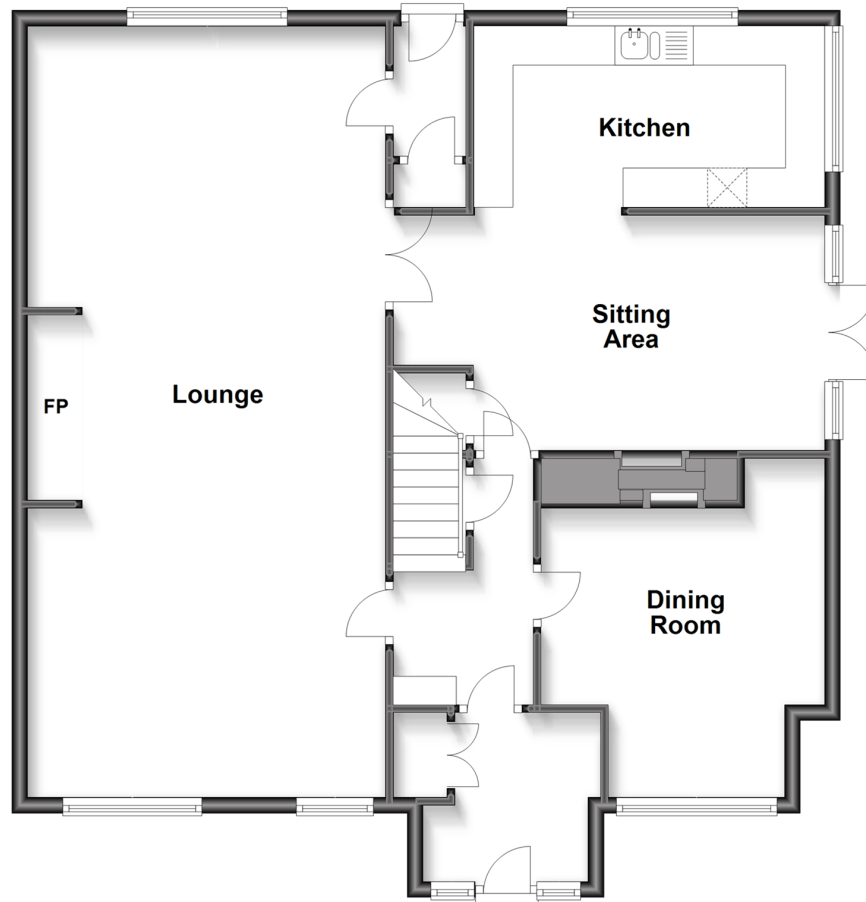


**Video Tour available**

**Wards**  
Helping you move forwards

## Ground Floor

Approx. 102.2 sq. metres (1099.8 sq. feet)



## First Floor

Approx. 80.0 sq. metres (861.0 sq. feet)



## Accommodation

### GROUND FLOOR

Entrance Porch

Entrance Hall

Sitting Area: 18'0 x 9'7 (5.49m x 2.92m)

Dining Room: 14'4 x 11'6 (4.37m x 3.51m)

Lounge: 32'5 x 14'9 (9.89m x 4.50m)

Kitchen: 15'0 x 7'0 (4.58m x 2.14m)

Rear Entrance Porch

### FIRST FLOOR

Landing

Bedroom 1: 14'3 x 12'7 into fitted wardrobes (4.35m x 3.84m)

Family Bathroom: 9'8 x 7'7 (2.95m x 2.31m)

Bedroom 2: 14'9 x 9'9 (4.50m x 2.97m)

Bedroom 3: 10'9 x 10'3 (3.28m x 3.13m)

Bedroom 4: 9'9 up to fitted wardrobes x 8'9 (2.97m x 2.67m)

Separate Shower Room: 6'8 x 6'3 (2.03m x 1.91m)

### OUTSIDE

360 degree Plot Garden

Detached Garage

Barn Style Car Port





## Main features

- A very impressive family home
- Well presented throughout
- Generous sized plot
- Detached garage
- Barn style car port plus brick built workshop
- Gated entrance



### Nearest Schools

Primary Schools: Lordswood Junior School 0.8 miles, Walderslade Primary 0.9 miles, Swingate Primary 0.9 miles

Secondary Schools: Walderslade Girls' School 2.0 miles, Greenacre School 2.1 miles, Bradfields School 2.3 miles



### Transport Information

Train Stations: Maidstone Barracks 3.9 miles, Snodland 3.9 miles, Rainham 3.9 miles



### Address

Lords Wood Lane, Lords Wood, Chatham, Kent, ME5



### Directions

For directions to this property please contact us.





**Wards**  
Helping you move forwards

Call Walderslade Branch 01634 865661 ■ [wardsofkent.co.uk](http://wardsofkent.co.uk)



- Legal advice should be taken to verify fixtures/fittings, planning, alterations and/or lease details
- Appliances & services are untested, dimensions are approximate and floor plans are not to scale
- Our Homewise partnership offer a 'Home for Life' plan to buyers over 60, granting a lifetime lease for your protection and reducing the purchase price by up to 59%



12143671/20221004/STM/KG