



Guide Price
£350,000

Freehold

3x  1x  1x 

**Montfort Road,
Walderslade, Chatham,
Kent, ME5**

OVER 60?

Secure this property
for up to **59% less!**

Wards
Helping you move forwards



Main features

- **Spacious semi detached bungalow**
- **Popular residential area**
- **Off road parking**
- **Sunny rear garden backing woodlands**
- **Close to local amenities and motorway links to the M2 and M20**

Accommodation

GROUND FLOOR

Entrance Porch

Hallway

Bedroom 1 : 11'8 x 10'3 (3.56m x 3.13m)

Bedroom 2 - Used as Dining Rm: 12'9 x 8'8 (3.89m x 2.64m)

Bedroom 3: 9'6 x 7'2 (2.90m x 2.19m)

Bathroom : 10'7 x 5'5 (3.23m x 1.65m)

Lounge : 14'7 x 12'4 (4.45m x 3.76m)

Kitchen : 10'8 x 8'8 (3.25m x 2.64m)

OUTSIDE

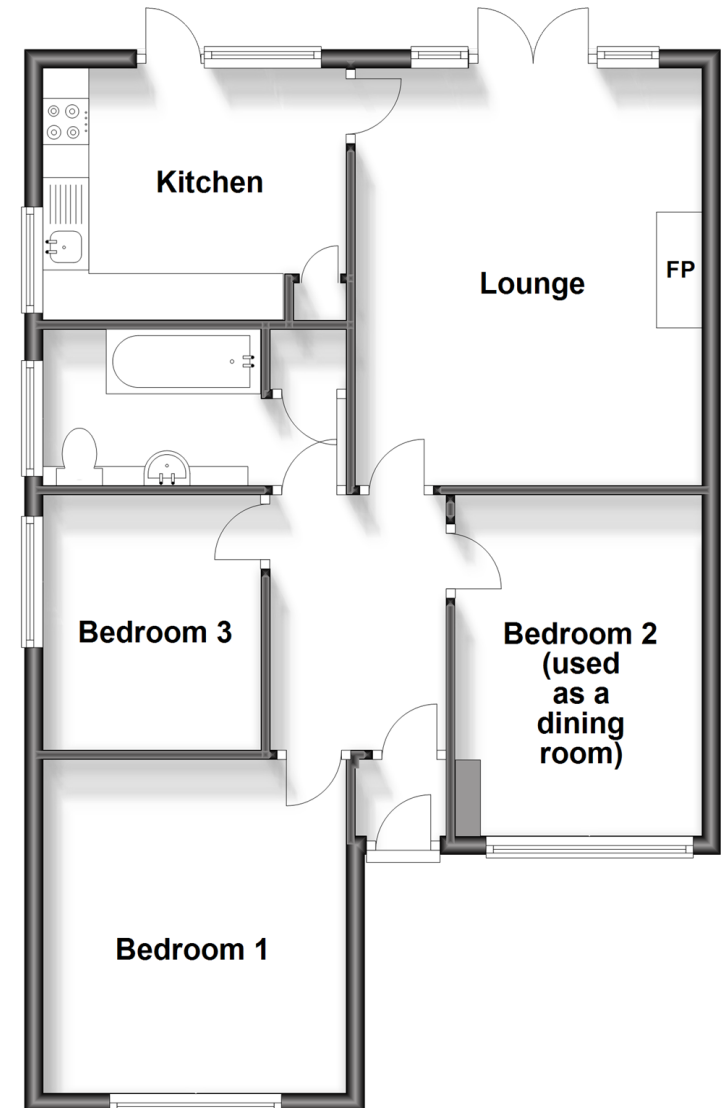
Rear Garden

Driveway

Front Garden

Ground Floor

Approx. 68.1 sq. metres (732.6 sq. feet)



Call Walderslade - 01634 865661 ■ wardsof Kent.co.uk

- Legal advice should be taken to verify fixtures/fittings, planning, alterations and/or lease details
- Appliances & services are untested, dimensions are approximate and floor plans are not to scale
- Through a Homewise Home For Life Plan people aged 60+ can secure this property for up to 59% less, by purchasing a Lifetime Lease.



12143806/20230727/ML/SB