



Guide Price
£450,000

Freehold

2x  1x  1x 

**Prince Charles Avenue,
Walderslade, Chatham,
Kent, ME5**

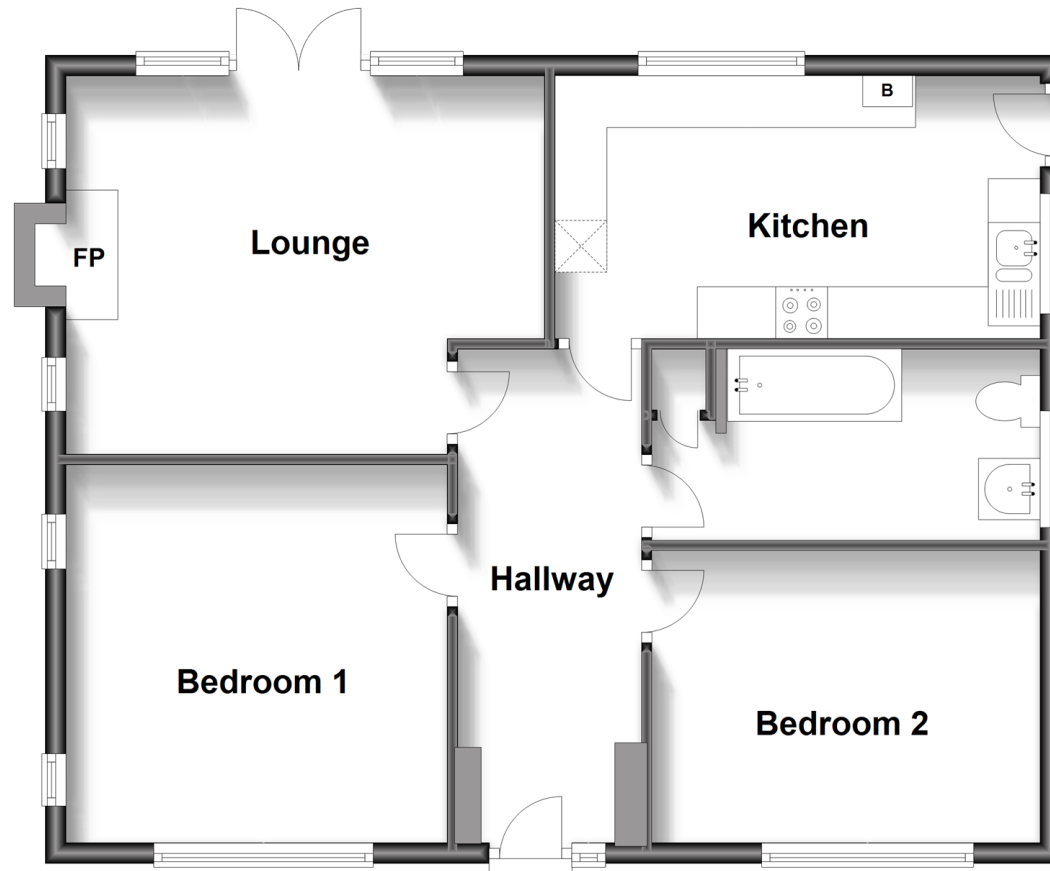
OVER 60?

Secure this property
for up to **59% less!**

Wards
Helping you move forwards

Ground Floor

Approx. 69.7 sq. metres (749.8 sq. feet)



Accommodation

ENTRANCE HALL

Bedroom 1: 12'0 x 11'9 (3.66m x 3.58m)

Bedroom 2: 12'1 x 9'3 (3.69m x 2.82m)

Bathroom: 12'1 x 5'6 (3.69m x 1.68m)

Lounge: 15'0 x 11'9 (4.58m x 3.58m)

Kitchen: 15'9 x 8'4 (4.80m x 2.54m)

Outside

Rear Garden

Driveway

Double Garage: 25'9 x 19'7 (7.85m x 5.97m)



Main features

- Quite a spacious property internally and externally
- A very deceptive plot tucked away in a non estate location
- Secluded gardens around
- Planning permission for 3 bedroom house on the plot
- Recently refitted bathroom



Nearest Schools

Primary Schools: Lordswood Junior School 0.3 miles, Walderslade Primary 0.3 miles, Maundene School 0.4 miles

Secondary Schools: Greenacre School 0.5 miles,



Transport Information

Train Stations: Chatham 2.5 miles, Rochester 2.9 miles, Gillingham 2.9 miles



Address

Prince Charles Avenue, Walderslade, Chatham, Kent, ME5



Directions

For directions to this property please contact us.



Call Walderslade Branch 01634 865661 ■ wardsofkent.co.uk



- Legal advice should be taken to verify fixtures/fittings, planning, alterations and/or lease details
- Appliances & services are untested, dimensions are approximate and floor plans are not to scale
- Through a Homewise Home For Life Plan people aged 60+ can secure this property for up to 59% less, by purchasing a Lifetime Lease.



12143852/20230628/ML/KG