



Price
£290,000

Freehold

3x  1x  1x 

**Kingfisher Drive,
Walderslade, Chatham,
Kent, ME5**

OVER 60?

Secure this property
for up to **59% less!**

Wards
Helping you move forwards



Main features

- A lovely home tucked away from the road
- Impressive Conservatory adding to the living space
- Modern fitted kitchen
- Garage en bloc with parking at the front of it
- Conveniently located to all amenities

Accommodation

GROUND FLOOR

Entrance Porch
Entrance Hall
Lounge : 11'7 x 11'4 (3.53m x 3.46m)
Kitchen/Diner : 16'3 x 11'3 (4.96m x 3.43m)
Conservatory : 9'3 x 9'0 (2.82m x 2.75m)

FIRST FLOOR

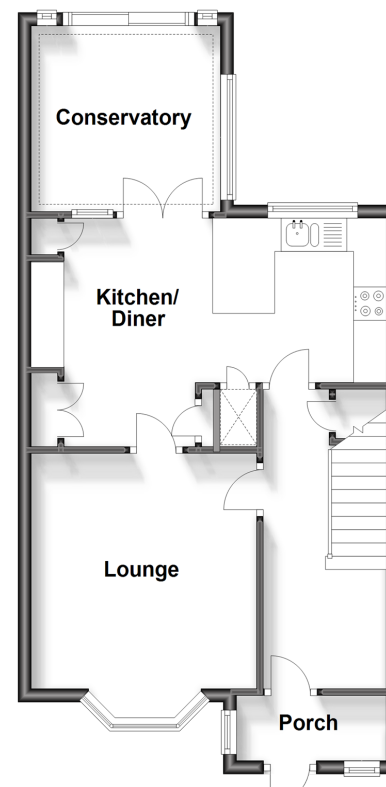
Landing
Bathroom : 8'5 x 5'5 (2.57m x 1.65m)
Bedroom 1 : 13'4 up to recess x 8'7 (4.07m x 2.62m)
Bedroom 2 : 11'8 x 8'7 (3.56m x 2.62m)
Bedroom 3 : 8'6 x 6'8 (2.59m x 2.03m)

OUTSIDE

Rear Garden
Rear access gate
Garage en bloc and Parking

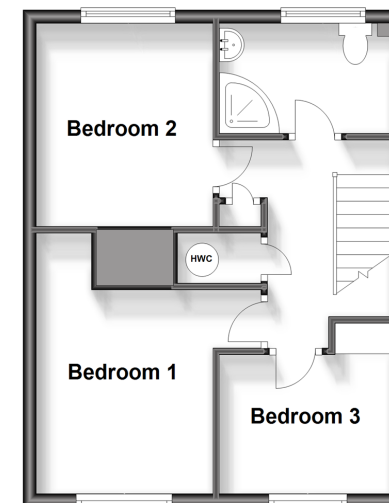
Ground Floor

Approx. 49.1 sq. metres (528.9 sq. feet)



First Floor

Approx. 38.2 sq. metres (410.8 sq. feet)



Call Walderslade - 01634 865661 ■ wardsofkent.co.uk

- Legal advice should be taken to verify fixtures/fittings, planning, alterations and/or lease details
- Appliances & services are untested, dimensions are approximate and floor plans are not to scale
- Through a Homewise Home For Life Plan people aged 60+ can secure this property for up to 59% less, by purchasing a Lifetime Lease.



12143856/20231021/ML/KG