



**Offers In
Excess Of
£350,000
Freehold**

3x  2x  1x 

**Tunbury Avenue,
Walderslade, Chatham,
Kent, ME5**

Wards
Helping you move forwards



Main features

- Modern link detached family home
- Handy downstairs cloakroom
- Two allocated parking spaces
- Private low maintenance rear garden
- Walking distance to local shops and Village Centre

Accommodation

GROUND FLOOR

Hallway

Lounge : 16'1 x 12'8 (4.91m x 3.86m)

Kitchen/Breakfast Room : 16'4 x 10'5 (4.98m x 3.18m)

Downstairs Cloakroom : 5'4 x 3'1 (1.63m x 0.94m)

FIRST FLOOR

Landing

Bedroom 1 : 12'2 x 11'9 (3.71m x 3.58m)

En Suite Shower Room : 9'5 x 4'2 (2.87m x 1.27m)

Bedroom 2 : 12'11 x 8'7 (3.94m x 2.62m)

Bedroom 3 : 11'5 x 8'3 (3.48m x 2.52m)

Bathroom : 6'9 x 5'7 (2.06m x 1.70m)

OUTSIDE

Front Garden

Rear Garden

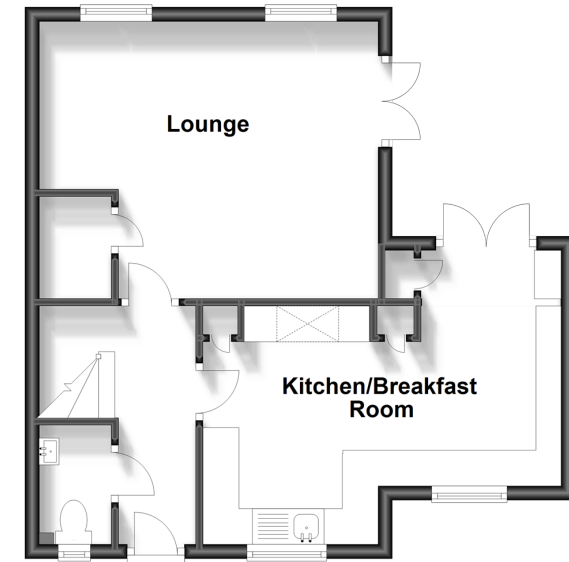
Two Allocated Parking Spaces

Call Walderslade - 01634 865661 ■ wardsof Kent.co.uk

- Legal advice should be taken to verify fixtures/fittings, planning, alterations and/or lease details
- Appliances & services are untested, dimensions are approximate and floor plans are not to scale

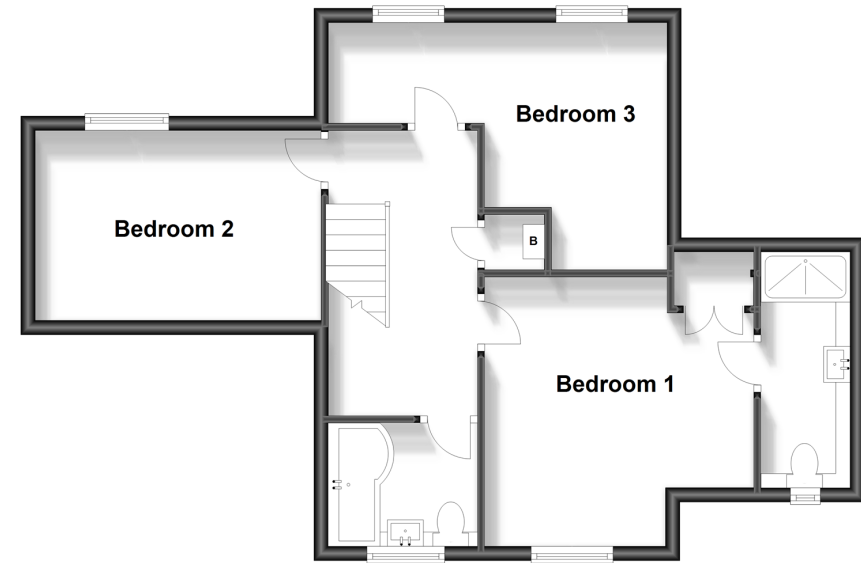
Ground Floor

Approx. 42.9 sq. metres (461.9 sq. feet)



First Floor

Approx. 53.7 sq. metres (578.2 sq. feet)



12143893/20240119/SM/SB