



Guide Price
£375,000

Freehold

4x  2x  2x 

**Wittersham Close,
Walderslade, Chatham,
Kent, ME5**

OVER 60?

Secure this property
for up to **59% less!**

Wards
Helping you move forwards



Main features

- Spacious and versatile family home
- Extended providing extra living space
- Downstairs cloakroom and utility room
- Family bathroom with separate shower room
- No chain

Accommodation

GROUND FLOOR

Entrance Porch

Lounge : 14'1 x 13'6 (4.30m x 4.12m)

Dining Room : 13'6 x 10'5 (4.12m x 3.18m)

Utility Room : 8'3 x 6'3 (2.52m x 1.91m)

Cloakroom : 5'4 x 3'1 (1.63m x 0.94m)

Kitchen : 15'2 x 8'7 (4.63m x 2.62m)

FIRST FLOOR

Landing

Bedroom 1: 14'9 x 8'7 (4.50m x 2.62m)

Bedroom 2: 13'6 x 8'6 (4.12m x 2.59m)

Bedroom 3 : 13'6 x 6'3 (4.12m x 1.91m)

Bedroom 4 : 13'7 x 8'7 (4.14m x 2.62m)

Family Bathroom : 11'9 x 5'6 (3.58m x 1.68m)

Shower Room : 7'2 x 6'0 (2.19m x 1.83m)

OUTSIDE

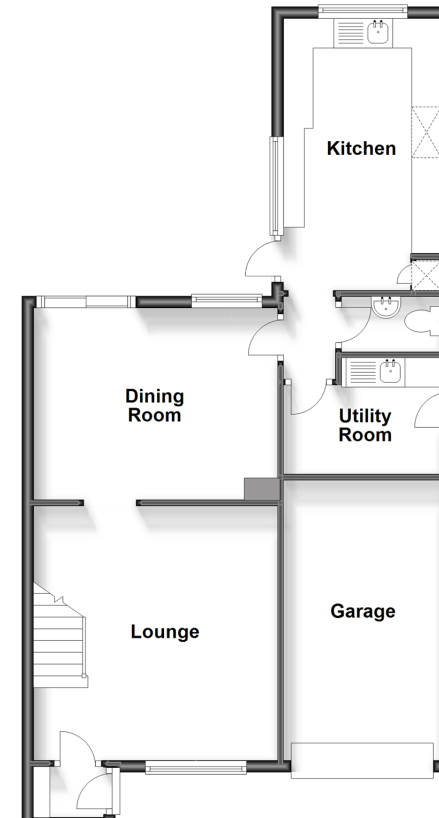
Garage

Driveway

Rear Garden

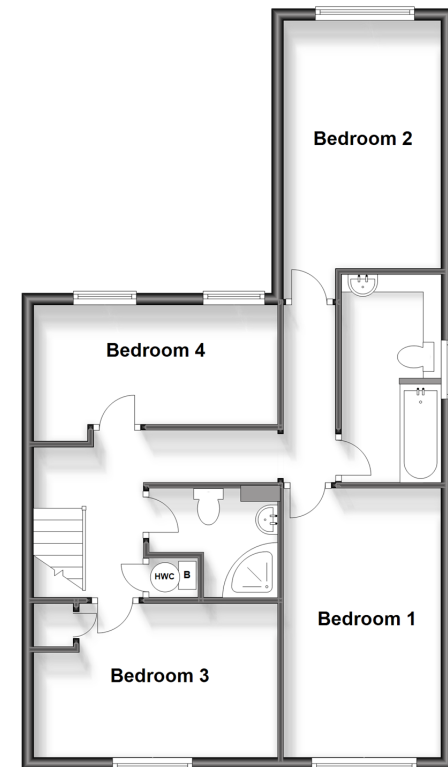
Ground Floor

Approx. 67.7 sq. metres (728.3 sq. feet)



First Floor

Approx. 66.3 sq. metres (713.5 sq. feet)



Call Walderslade - 01634 865661 ■ wardsofKent.co.uk

- Legal advice should be taken to verify fixtures/fittings, planning, alterations and/or lease details
- Appliances & services are untested, dimensions are approximate and floor plans are not to scale
- Through a Homewise Home For Life Plan people aged 60+ can secure this property for up to 59% less, by purchasing a Lifetime Lease.



12143947/20231026/ML/KG