



OVER 60?

Secure this property
for up to **59% less!**

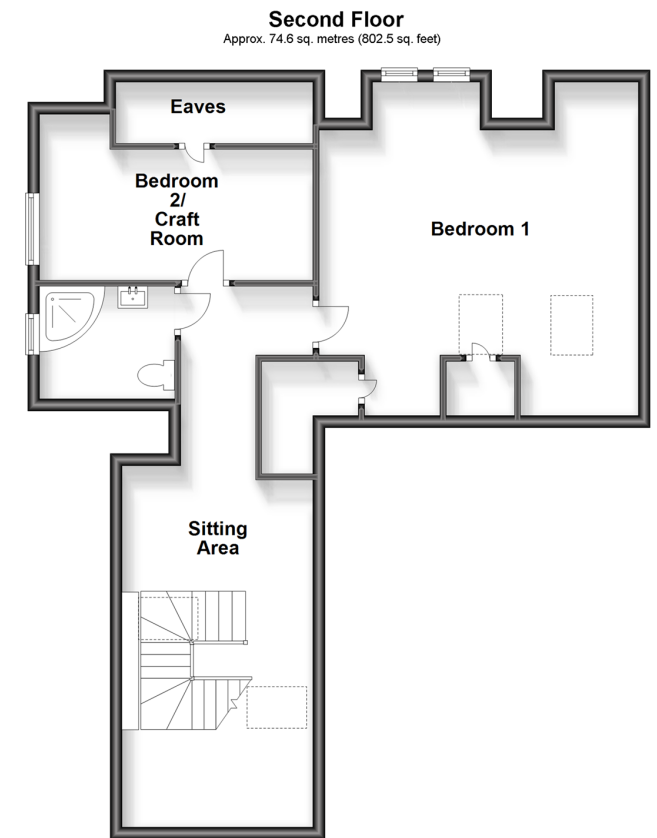
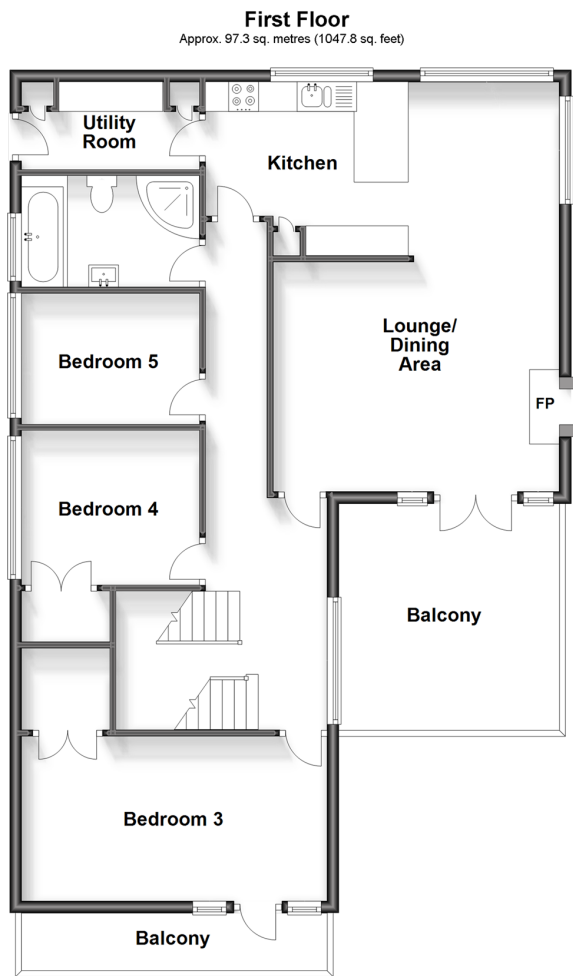
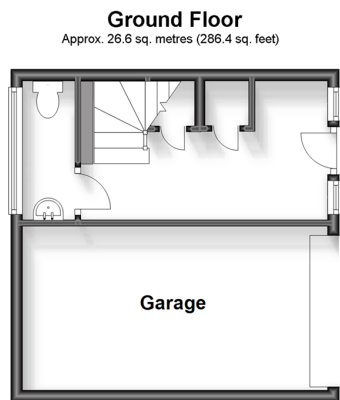
Guide Price
£650,000

Freehold

5x  2x  2x 

**Boxley Road,
Walderslade, Kent, ME5**

Wards
Helping you move forwards



Accommodation

GROUND FLOOR

Garage
Entrance Hall
Cloakroom : 6'9 x 2'9 (2.06m x 0.84m)

FIRST FLOOR

Lounge/Diner: 22'0 at widest point x 15'9 (6.71m x 4.80m)
Balcony via Lounge/Diner
Kitchen : 11'5 x 9'5 (3.48m x 2.87m)
Utility Room : 9'7 x 4'8 (2.92m x 1.42m)
Bath/Shower Room : 9'7 x 6'2 (2.92m x 1.88m)

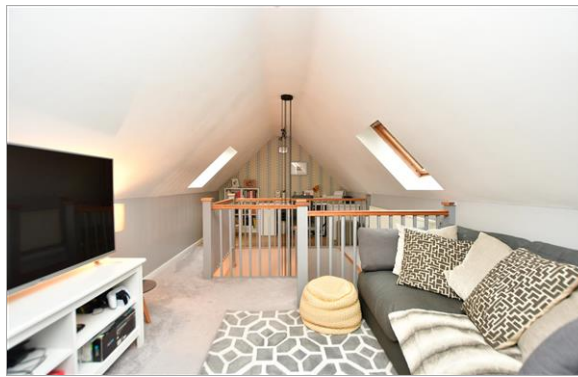
Bedroom 5 : 9'7 x 8'5 (2.92m x 2.57m)
Bedroom 4 : 16'4 x 9'6 (4.98m x 2.90m)
Bedroom 3 : 16'4 x 9'6 (4.98m x 2.90m)
Door from Bedroom 3 to Balcony

SECOND FLOOR

Bedroom 1: 18'0 x 15'6 (5.49m x 4.73m)
Bedroom 2/ Craft Room : 13'7 x 10'0 (4.14m x 3.05m)
Shower Room : 6'4 x 5'7 (1.93m x 1.70m)
Seating Area

OUTSIDE

Front Garden
Driveway
Rear Garden



Main features

- Executive family home which has been finished to a very high standard
- Social living area leading to a big outside terrace area
- Handy cloakroom and separate utility room
- Sought after location
- Easy access to motorway connections



Nearest Schools

Primary Schools: Tunbury Primary 0.9 miles, Walderslade Primary 1.1 miles, Maundene School 1.1 miles

Secondary Schools: Walderslade Girls' School 1.6 miles, Greenacre School 1.7 miles, Bradfields School 1.9 miles



Transport Information

Train Stations: Snodland 3.6 miles, Aylesford 3.7 miles, Chatham 3.8 miles



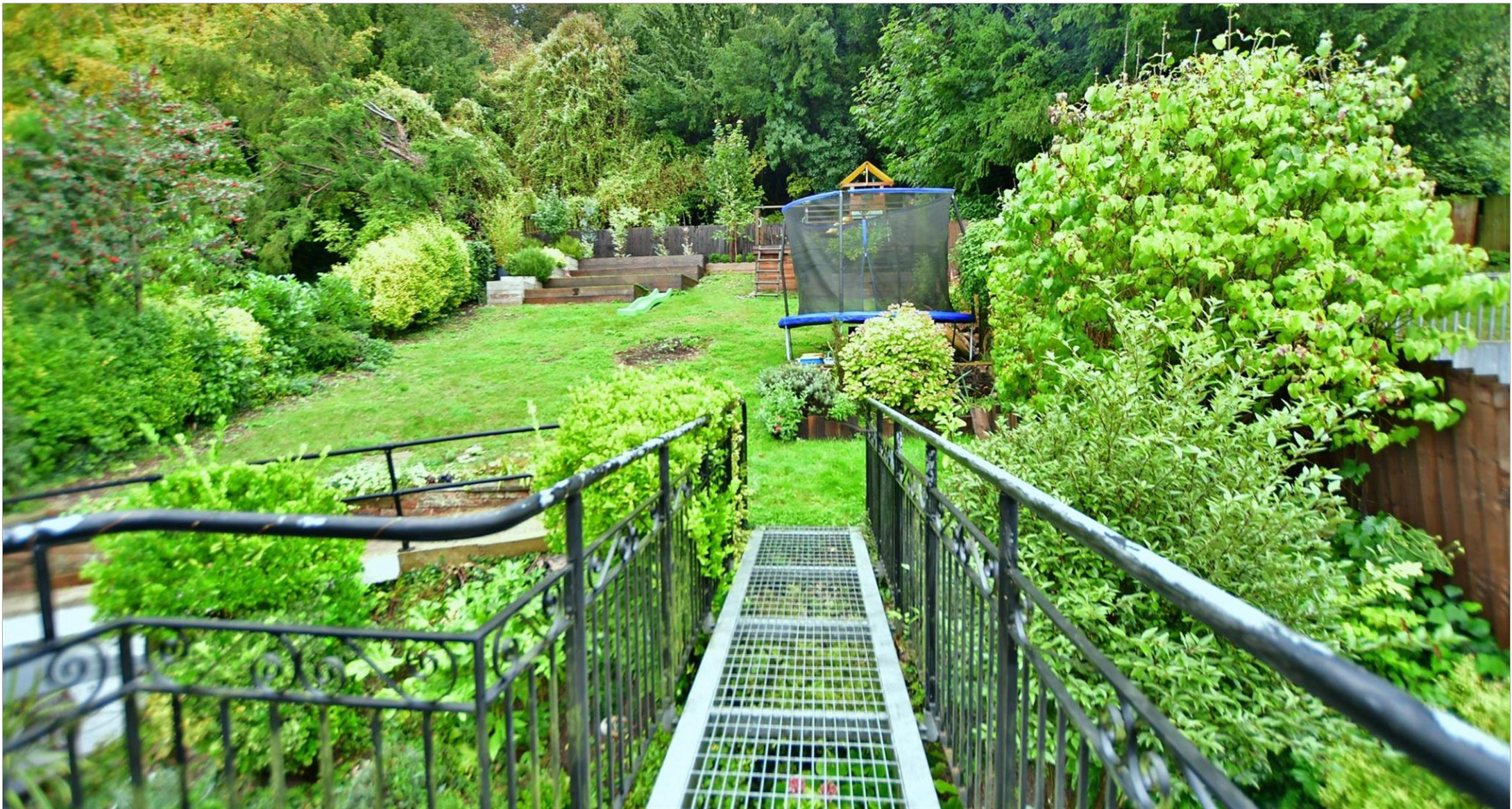
Address

Boxley Road, Walderslade, Kent, ME5



Directions

For directions to this property please contact us.



Wards
Helping you move forwards

Call Walderslade Branch 01634 865661 ■ wardsofkent.co.uk



■ Legal advice should be taken to verify fixtures/fittings, planning, alterations and/or lease details ■ Appliances & services are untested, dimensions are approximate and floor plans are not to scale
■ Through a Homewise Home For Life Plan people aged 60+ can secure this property for up to 59% less, by purchasing a Lifetime Lease.



12143990/20231026/ML/KG