



**Price**  
**£425,000**

**Freehold**

3x  2x  1x 

**Ashleigh Gardens, Blue  
Bell Hill, Chatham, Kent,  
ME5**

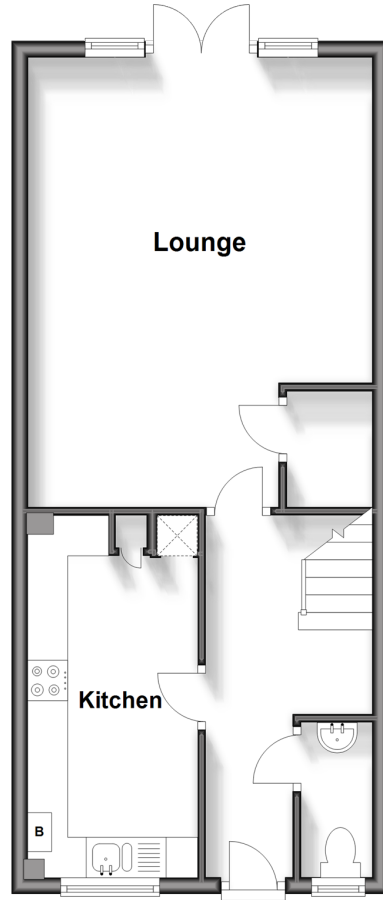
**OVER 60?**

Secure this property  
for up to **59% less!**

*Wards*  
Helping you move forwards

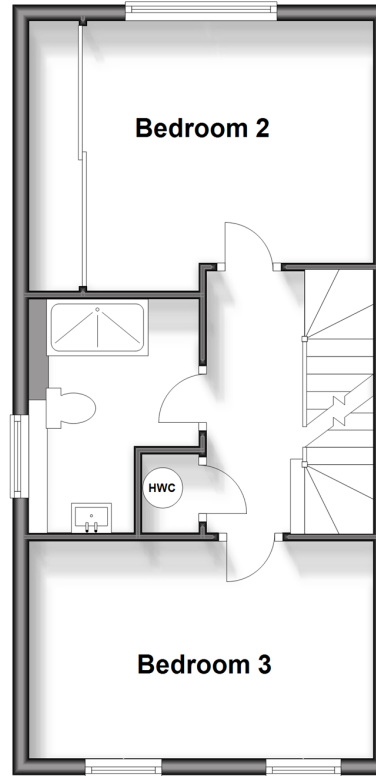
## Ground Floor

Approx. 43.8 sq. metres (471.5 sq. feet)



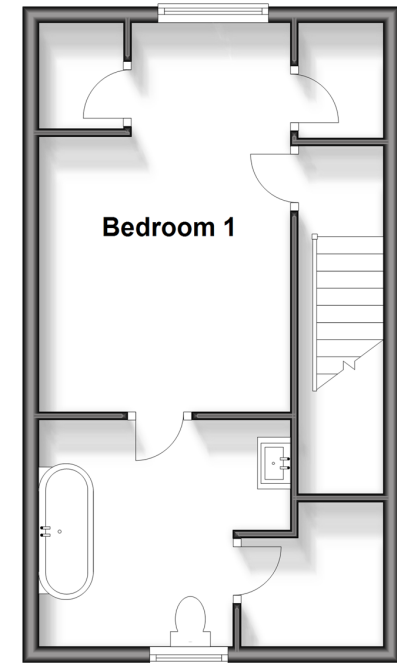
## First Floor

Approx. 39.4 sq. metres (423.7 sq. feet)



## Second Floor

Approx. 33.3 sq. metres (358.2 sq. feet)



## Accommodation

### GROUND FLOOR

Entrance Hallway

Kitchen : 14'6 x 7'3 (4.42m x 2.21m)

Lounge : 18'2 x 14'11 (5.54m x 4.55m)

Cloakroom

### FIRST FLOOR

Landing

Bedroom 3 : 11'8 x 9'9 (3.56m x 2.97m)

Bedroom 2: 14'11 x 8'9 (4.55m x 2.67m)

Bathroom : 9'5 x 6'9 (2.87m x 2.06m)

### SECOND FLOOR

Landing

Bedroom 1 : 16'1 x 10'3 (4.91m x 3.13m)

En Suite : 10'3 x 8'9 (3.13m x 2.67m)

### OUTSIDE

Rear Garden

Off Road Parking





## Main features

- An immaculate property tucked away in a sought after location
- Private gated access
- Arranged over 3 floors
- Downstairs cloakroom plus en suite to main bedroom
- Close to motorway links



### Nearest Schools

Primary Schools: Burham C of E Primary 0.8 miles, Tunbury Primary 0.9 miles, Horsted Junior School 1.2 miles

Secondary Schools: Greenacre School 1.5 miles,



### Transport Information

Train Stations: Snodland 2.2 miles, New Hythe 2.4 miles, Aylesford 2.7 miles



### Address

Ashleigh Gardens, Blue Bell Hill, Chatham, Kent, ME5



### Directions

For directions to this property please contact us.





**Wards**  
Helping you move forwards

Call Walderslade Branch 01634 865661 ■ [wardsofkent.co.uk](http://wardsofkent.co.uk)



- Legal advice should be taken to verify fixtures/fittings, planning, alterations and/or lease details
- Appliances & services are untested, dimensions are approximate and floor plans are not to scale
- Through a Homewise Home For Life Plan people aged 60+ can secure this property for up to 59% less, by purchasing a Lifetime Lease.



12143998/20240119/ML/KG