



Price
£350,000

Freehold

3x  1x  2x 

**Beechwood Avenue,
Chatham, Kent, ME5**

OVER 60?

Secure this property
for up to **59% less!**

Wards
Helping you move forwards



Main features

- Well presented family home
- Spacious lounge and dining area
- Extended to the rear offering a large open kitchen
- Ample parking at the front and double garage to the rear
- Situated in the sought after location of Darland and close to the amenities

Accommodation

GROUND FLOOR

Entrance Hall

Dining Area : 14'4 x 12'3 (4.37m x 3.74m)

Lounge: 26'5 x 11'10 (8.06m x 3.61m)

Kitchen: (L-shaped) 21'8 x 18'10 (6.61m x 5.74m) plus 8'11 x 7'10 (2.72m x 2.39m)

FIRST FLOOR

Landing

Bedroom 1 : 12'0 x 11'10 (3.66m x 3.61m)

Bedroom 2 : 14'4 x 11'11 (4.37m x 3.63m)

Bedroom 3 : 7'11 x 7'1 (2.41m x 2.16m)

Shower Room

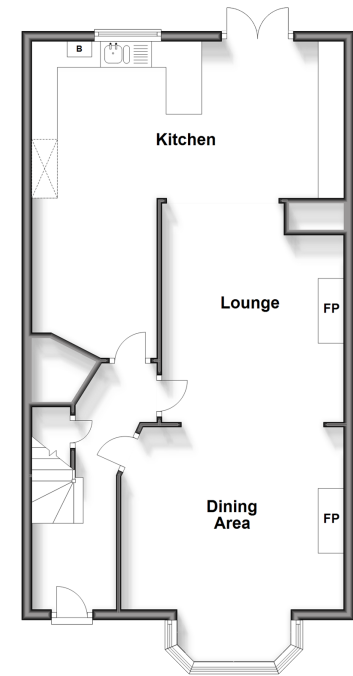
OUTSIDE

Rear Garden

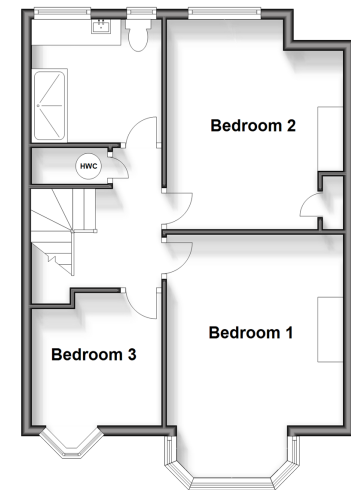
Double Garage to Rear

Driveway

Ground Floor
Approx. 69.0 sq. metres (742.2 sq. feet)



First Floor
Approx. 49.2 sq. metres (529.5 sq. feet)



Call Rainham - 01634 373531 ■ wardsofkent.co.uk

- Legal advice should be taken to verify fixtures/fittings, planning, alterations and/or lease details
- Appliances & services are untested, dimensions are approximate and floor plans are not to scale
- Through a Homewise Home For Life Plan people aged 60+ can secure this property for up to 59% less, by purchasing a Lifetime Lease.



12144041/20240316/NJ/NJ