



Guide Price
£300,000

Freehold

3x  1x  1x 

**Princes Avenue,
Walderslade, Chatham,
Kent, ME5**

OVER 60?

Secure this property
for up to **59% less!**

Wards
Helping you move forwards



Main features

- A lovely property well presented throughout
- Versatile and flexible layout
- Elevated views over the valley
- Driveway for 2 cars
- Walking distance of Walderslade Village Centre

Accommodation

GROUND FLOOR

Entrance Hall

Lounge : 14'3 x 10'5 (4.35m x 3.18m)

Dining Area : 10'8 x 10'0 (3.25m x 3.05m)

Kitchen : 10'7 x 8'5 (3.23m x 2.57m)

Bedroom 1 : 14'1 x 10'5 (4.30m x 3.18m)

Bathroom : 6'4 x 5'4 (1.93m x 1.63m)

FIRST FLOOR

Landing

Bedroom 2 : 14'2 x 8'5 (4.32m x 2.57m)

Bedroom 3 : 8'5 x 7'1 (2.57m x 2.16m)

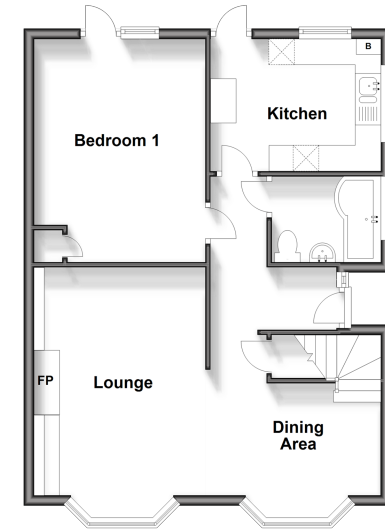
OUTSIDE

Large Front and Rear Gardens

2 Parking spaces

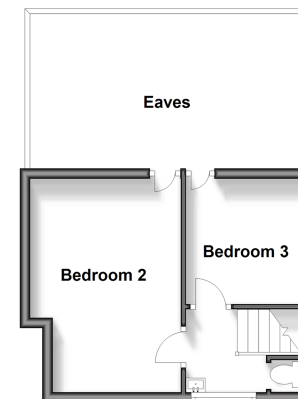
Ground Floor

Approx. 59.2 sq. metres (637.6 sq. feet)



First Floor

Approx. 21.4 sq. metres (230.8 sq. feet)



Call Walderslade - 01634 865661 ■ wardsof Kent.co.uk

- Legal advice should be taken to verify fixtures/fittings, planning, alterations and/or lease details
- Appliances & services are untested, dimensions are approximate and floor plans are not to scale
- Through a Homewise Home For Life Plan people aged 60+ can secure this property for up to 59% less, by purchasing a Lifetime Lease.



12144051/20240418/ML/KG