



OVER 60?

Secure this property
for up to **59% less!**

Price

£260,000

Freehold

2x  1x  1x 

**Harebell Close,
Walderslade, Chatham,
Kent, ME5**

Wards
Helping you move forwards



Main features

- A great first time buy
- Well presented throughout and tucked away along the green
- Potential to change to a three bedroom - subject to planning consents
- Close to local amenities and a short drive to the M2/M20 motorway
- Rear access

Accommodation

GROUND FLOOR

Entrance Porch
 Entrance Hall
 Kitchen : 12'7 x 8'4 (3.84m x 2.54m)
 Lounge : 15'0 x 11'2 (4.58m x 3.41m)
 Office : 7'5 x 6'1 (2.26m x 1.86m)
 Sun Room : 9'8 x 8'0 (2.95m x 2.44m)

FIRST FLOOR

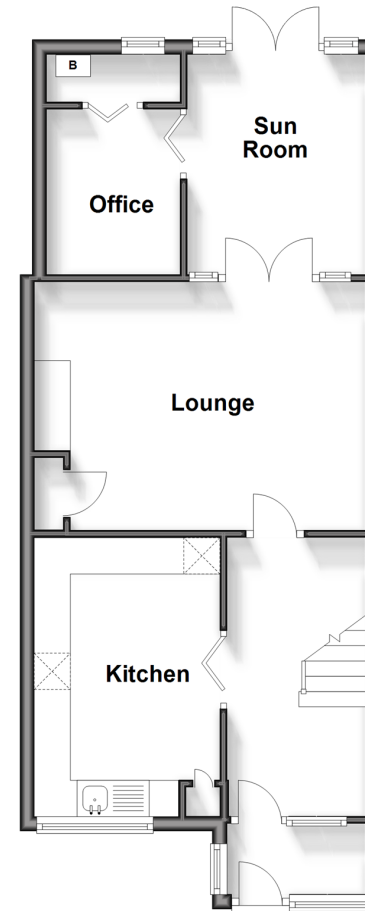
Landing
 Bedroom 1 : 15'0 x 8'6 (4.58m x 2.59m)
 Bedroom 2 : 12'8 x 8'5 (3.86m x 2.57m)
 Bathroom : 6'0 x 5'3 (1.83m x 1.60m)

OUTSIDE

Front Garden
 Rear Garden
 Rear Access Gate

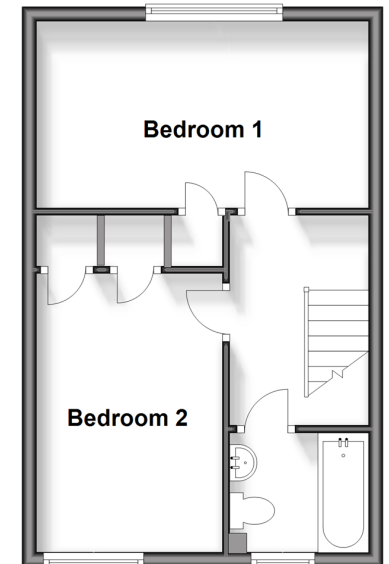
Ground Floor

Approx. 49.7 sq. metres (534.7 sq. feet)



First Floor

Approx. 33.6 sq. metres (361.4 sq. feet)



Call Walderslade - 01634 865661 ■ wardsof Kent.co.uk

- Legal advice should be taken to verify fixtures/fittings, planning, alterations and/or lease details
- Appliances & services are untested, dimensions are approximate and floor plans are not to scale
- Through a Homewise Home For Life Plan people aged 60+ can secure this property for up to 59% less, by purchasing a Lifetime Lease.



12144116/20240430/ML/KG