



OVER 60?

Secure this property
for up to **59% less!**

Price

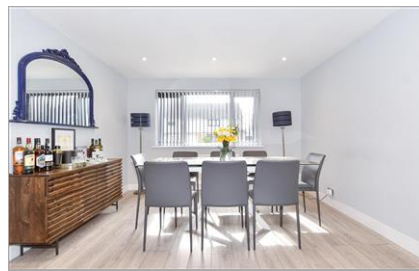
£400,000

Freehold

4x  1x  2x 

**Willow Tree Close,
Willesborough, Ashford,
Kent, TN24**

Wards
Helping you move forwards



Main features

- Large garden with larger than normal garage
- Modernised throughout to a high specification
- Cul-de-sac location
- Sought after position, ideal for commuting with good motorway links
- Within walking distance to local shops and mainline station with high speed line

Accommodation

GROUND FLOOR

Entrance Porch
Hallway
Dining Room: 11'6 x 11'1 (3.51m x 3.38m)
Lounge: 12'4 x 10'7 (3.76m x 3.23m)
Kitchen: 10'9 x 7'5 (3.28m x 2.26m)
Cloakroom

FIRST FLOOR

Landing
Bedroom 1: 12'5 x 11'7 (3.79m x 3.53m)
Bedroom 2: 11'1 x 9'7 (3.38m x 2.92m)
Bedroom 3: 8'6 x 7'9 (2.59m x 2.36m)
Bathroom

SECOND FLOOR

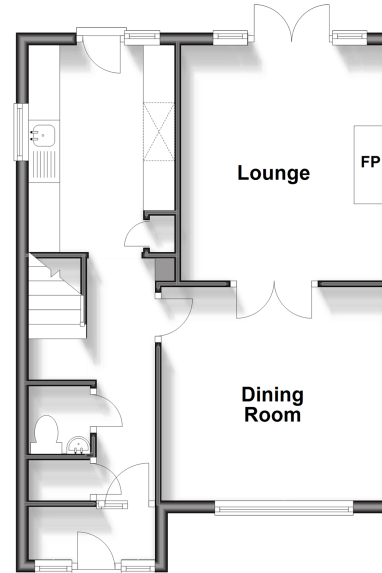
Bedroom 4: 12'9 x 12'5 (3.89m x 3.79m)

OUTSIDE

Off Road Parking
Garage: 20'9 x 10'4 (6.33m x 3.15m)
Storage Room behind Garage: 10'4 x 8'2 (3.15m x 2.49m)
Rear Garden

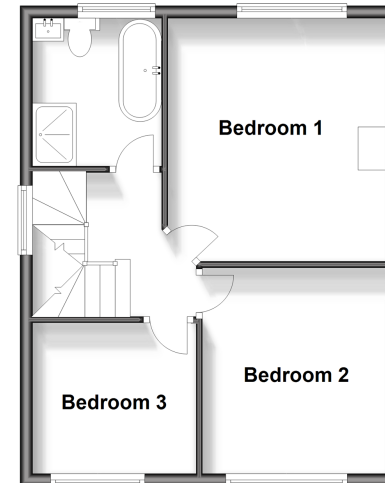
Ground Floor

Approx. 43.6 sq. metres (469.3 sq. feet)



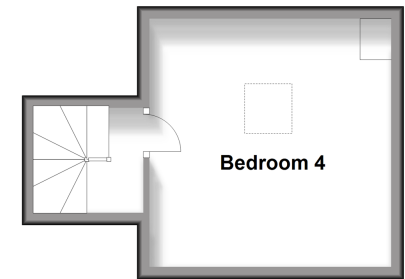
First Floor

Approx. 41.7 sq. metres (448.6 sq. feet)



Second Floor

Approx. 18.3 sq. metres (197.2 sq. feet)



Call Ashford - 01233 639531 ■ wardsofkent.co.uk

- Legal advice should be taken to verify fixtures/fittings, planning, alterations and/or lease details
- Through a Homewise Home For Life Plan people aged 60+ can secure this property for up to 59% less, by purchasing a Lifetime Lease.

- Appliances & services are untested, dimensions are approximate and floor plans are not to scale



12222000/20240516/TT/CF