



**Price**

**£600,000**

**Freehold**

5x  2x  1x 

**Cherry Glebe, Mersham,  
Kent, TN25**

**OVER 60?**

Secure this property  
for up to **59% less!**

*Wards*  
Helping you move forwards





## Main features

- **Garage and driveway parking for multiple vehicles**
- **Beautiful front and rear gardens with plenty of mature plants**
- **A large lounge/dining area with triple aspect windows, segmented by a chimney**
- **Well-proportioned bedrooms**
- **Situated in Mersham village, down a mature close and tucked away in the far corner**

## Accommodation

### GROUND FLOOR

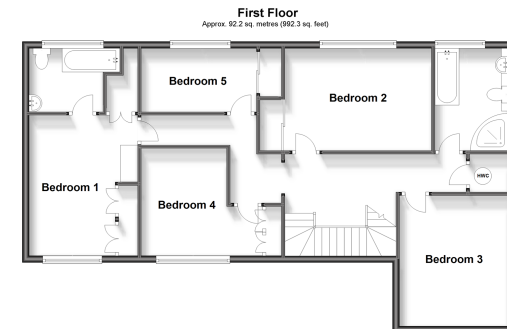
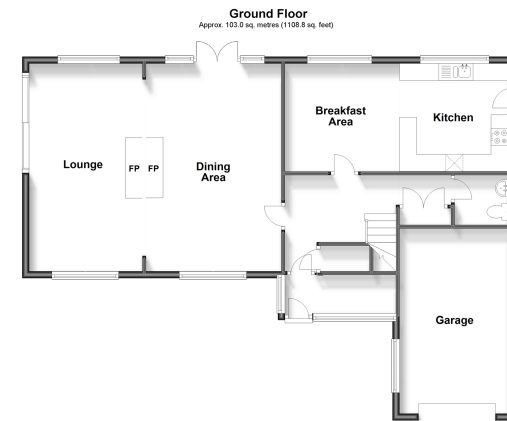
Porch  
Hallway  
Cloakroom  
Lounge/Dining Area: 24'11 x 20'0 (7.60m x 6.10m)  
Kitchen/Breakfast Area: 21'2 x 9'2 (6.46m x 2.80m)

### FIRST FLOOR

Landing  
Bedroom 1: 14'0 x 9'11 (4.27m x 3.02m)  
En-Suite Shower Room  
Bedroom 2: 13'10 x 9'4 (4.22m x 2.85m)  
Bedroom 3: 12'5 x 10'4 (3.79m x 3.15m)  
Bedroom 4: 11'3 (3.43m) narrowing to 7'11 (2.41m) x 10'11 (3.33m)  
Bedroom 5: 11'4 x 6'0 (3.46m x 1.83m)  
Bathroom

### OUTSIDE

Front & Rear Gardens  
Garage & Driveway



**Call Ashford - 01233 639531 ■ [wardsofkent.co.uk](http://wardsofkent.co.uk)**

■ Legal advice should be taken to verify fixtures/fittings, planning, alterations and/or lease details  
■ Through a Homewise Home For Life Plan people aged 60+ can secure this property for up to 59% less, by purchasing a Lifetime Lease.

■ Appliances & services are untested, dimensions are approximate and floor plans are not to scale



12224245/20230808/MB/NF