



Wards
FOR SALE
01233 639531

OVER 60?

Secure this property
for up to **59% less!**

Price

£260,000

Freehold

3x  1x  1x 

**The Rise, Ashford, Kent,
TN23**

Wards
Helping you move forwards



Main features

- Elevated cul-de-sac position
- Gas central heating to radiators
- Driveway parking
- Large workshop and shed ideal for those who like DIY projects
- Private rear garden which is not overlooked with direct access to the woods

Accommodation

GROUND FLOOR

Hallway
Bathroom
Lounge: 14'2 x 12'4 (4.32m x 3.76m)
Kitchen: 9'2 x 7'7 (2.80m x 2.31m)

FIRST FLOOR

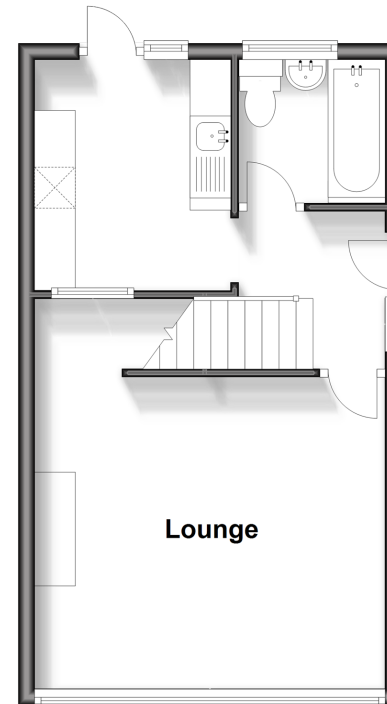
Landing
Bedroom 1: 14'1 x 9'6 (4.30m x 2.90m)
Bedroom 2: 11'8 x 7'8 (3.56m x 2.34m)
Bedroom 3: 6'6 x 5'9 (1.98m x 1.75m)

OUTSIDE

Front & Rear Gardens
Driveway

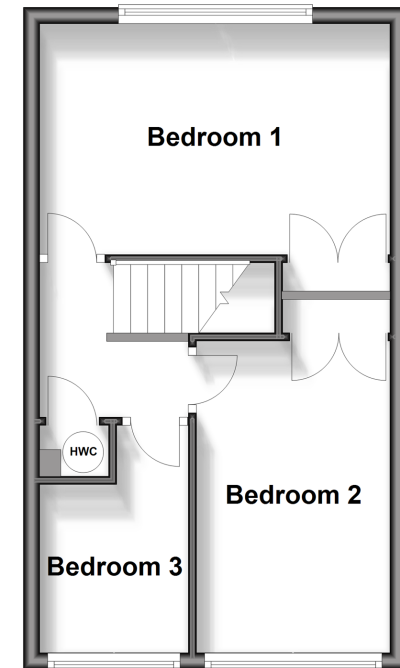
Ground Floor

Approx. 33.0 sq. metres (355.1 sq. feet)



First Floor

Approx. 33.0 sq. metres (355.1 sq. feet)



Call Ashford - 01233 639531 ■ wardsofkent.co.uk

■ Legal advice should be taken to verify fixtures/fittings, planning, alterations and/or lease details
■ Through a Homewise Home For Life Plan people aged 60+ can secure this property for up to 59% less, by purchasing a Lifetime Lease.

■ Appliances & services are untested, dimensions are approximate and floor plans are not to scale



12227754/20240203/MB/JRB