



OVER 60?

Secure this property
for up to **59% less!**

Price

£310,000

Freehold

3x  1x  1x 

**South Motto, Park Farm,
Ashford, Kent, TN23**

Wards
Helping you move forwards



Main features

- Open-plan kitchen/diner
- Off-road parking for two cars
- Popular location within walking distance of two primary schools and a secondary school
- Situated in a quiet and peaceful cul-de-sac
- Close to bus stops and supermarket

Accommodation

GROUND FLOOR

Hallway

Lounge: 14'4 x 11'5 (4.37m x 3.48m)

Kitchen/Diner: 14'9 x 10'1 (4.50m x 3.08m)

Conservatory: 10'3 x 7'4 (3.13m x 2.24m)

FIRST FLOOR

Landing

Bedroom 1: 14'9 (4.50m) x 11'5 (3.48m) narrowing to 8'4 (2.54m)

Bedroom 2: 9'3 x 7'3 (2.82m x 2.21m)

Bedroom 3: 7'6 x 7'3 (2.29m x 2.21m)

Bathroom

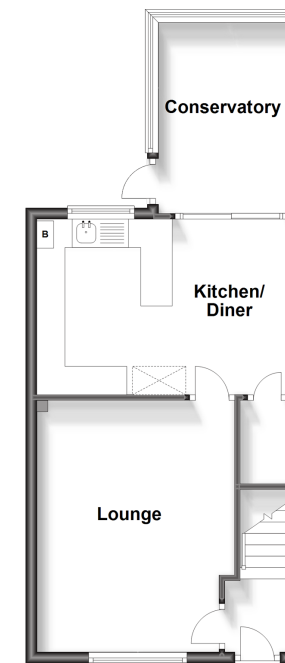
OUTSIDE

Front & Rear Gardens

Off-Road Parking for Two Cars

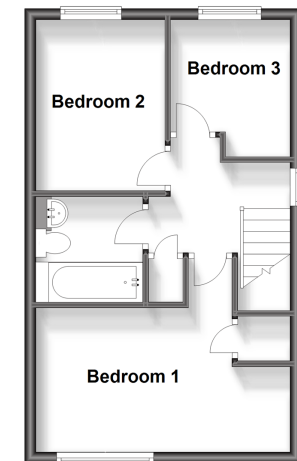
Ground Floor

Approx. 42.8 sq. metres (460.7 sq. feet)



First Floor

Approx. 34.6 sq. metres (372.3 sq. feet)



Call Ashford - 01233 639531 ■ wardsofkent.co.uk

- The seller is a person connected with Wards as defined in the Estate Agents Act 1979
- Appliances & services are untested, dimensions are approximate and floor plans are not to scale

- Legal advice should be taken to verify fixtures/fittings, planning, alterations and/or lease details
- Through a Homewise Home For Life Plan people aged 60+ can secure this property for up to 59% less, by purchasing a Lifetime Lease.