



Price

£775,000

Freehold

5x  1x  2x 

**Bromley Green Road,
Ashford, Kent, TN26**

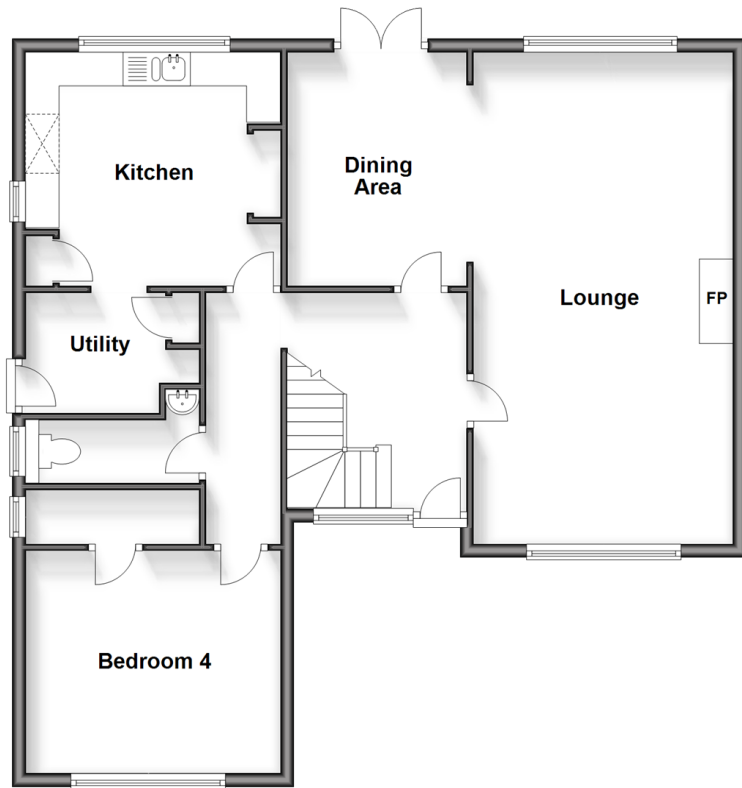
OVER 60?

Secure this property
for up to **59% less!**

Wards
Helping you move forwards

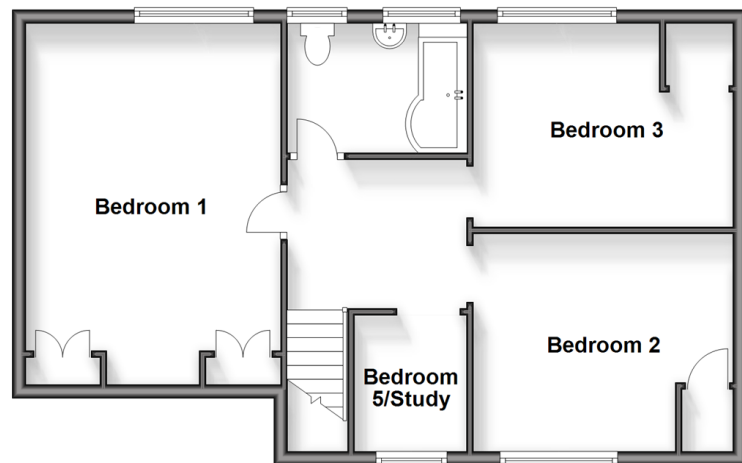
Ground Floor

Approx. 87.9 sq. metres (946.1 sq. feet)



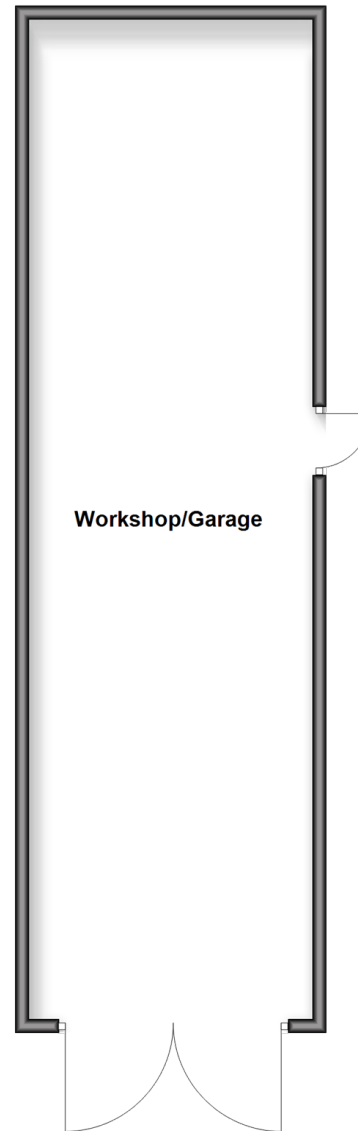
First Floor

Approx. 62.7 sq. metres (675.1 sq. feet)



Outbuilding

Approx. 62.4 sq. metres (671.6 sq. feet)



Accommodation

GROUND FLOOR

Entrance Hall

Lounge: 23'8 x 12'8 (7.22m x 3.86m)

Dining Area: 11'7 x 8'10 (3.53m x 2.69m)

Kitchen: 12'3 x 11'7 (3.74m x 3.53m)

Utility: 8'4 x 5'9 (2.54m x 1.75m)

Cloakroom

Bedroom 4: 12'4 x 10'7 (3.76m x 3.23m)

FIRST FLOOR

Landing

Bedroom 1: 17'2 x 12'4 (5.24m x 3.76m)

Bathroom

Bedroom 2: 10'9 x 10'8 (3.28m x 3.25m)

Bedroom 3: 12'7 x 10'6 (3.84m x 3.20m)

Bedroom 5/Study: 6'7 x 5'7 (2.01m x 1.70m)

OUT BUILDING

Workshop/Garage

OUTSIDE

Front Garden

Rear Garden

Garage

Driveway



Main features

- Garage and large outbuilding
- Ample parking
- Big garden to the rear
- Sought after location, and close to good local schools
- Great position and plot size, with good interlinks surrounding



Nearest Schools

Primary Schools: Furley Park Primary 1.6 miles, Hamstreet Primary 1.7 miles, Kingsnorth C of E Primary 1.7 miles

Secondary Schools: Ashford Christ Church C of E Maths & Computing Specialist College 2.3 miles



Transport Information

Train Stations: Ham Street 1.7 miles, Ashford International 3.5 miles, Appledore 4.4 miles



Address

Bromley Green Road, Ashford, Kent, TN26



Directions

For directions to this property please contact us.



Call Ashford Branch 01233 639531 ■ wardsofkent.co.uk



- Legal advice should be taken to verify fixtures/fittings, planning, alterations and/or lease details
- Appliances & services are untested, dimensions are approximate and floor plans are not to scale
- Through a Homewise Home For Life Plan people aged 60+ can secure this property for up to 59% less, by purchasing a Lifetime Lease.



12234351/20240420/JW/CF