



OVER 60?

Secure this property
for up to **59% less!**

Price
£400,000

Freehold

3x  2x  1x 

**Hereford Close,
Kennington, Ashford,
Kent, TN24**

Wards
Helping you move forwards



Main features

- Beautifully extended family house
- Modern kitchen/dining area
- Large sunny rear garden
- Close to amenities and transport links
- Benefitting from private off road parking

Accommodation

GROUND FLOOR

Porch
Hallway
Cloakroom
Lounge: 17'0 x 16'0 (5.19m x 4.88m)
Conservatory: 15'4 x 14'0 (4.68m x 4.27m)
Kitchen/Dining Area: 26'0 x 8'3 (7.93m x 2.52m)

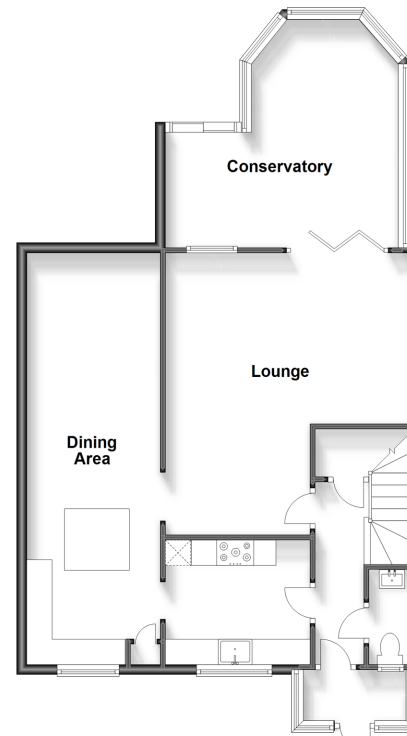
FIRST FLOOR

Landing
Bedroom 1: 13'10 x 10'5 (4.22m x 3.18m)
En-Suite Shower Room
Bedroom 2: 11'5 x 6'5 (3.48m x 1.96m)
Bedroom 3: 11'0 x 7'3 (3.36m x 2.21m)
Bathroom

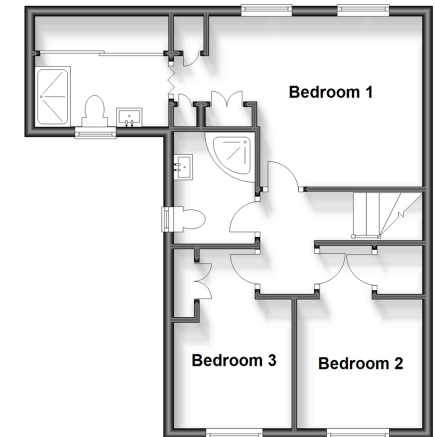
OUTSIDE

Rear Garden

Ground Floor
Approx. 80.5 sq. metres (866.0 sq. feet)



First Floor
Approx. 45.5 sq. metres (489.4 sq. feet)



Call Ashford - 01233 639531 ■ wardsofkent.co.uk

■ Legal advice should be taken to verify fixtures/fittings, planning, alterations and/or lease details
■ Through a Homewise Home For Life Plan people aged 60+ can secure this property for up to 59% less, by purchasing a Lifetime Lease.

■ Appliances & services are untested, dimensions are approximate and floor plans are not to scale