



**Price**  
**£310,000**

**Freehold**

3x  1x  1x 

**Belmont Road,  
Kennington, Ashford,  
Kent, TN24**

**OVER 60?**

Secure this property  
for up to **59% less!**

*Wards*  
Helping you move forwards



## Main features

- **Garage en-bloc**
- **Driveway parking to front**
- **Modern kitchen with plenty of storage**
- **Gas central heating and double glazing**
- **Level rear garden with side gate access**
- **Popular Kennington location close to schools, shops and transport facilities**

## Accommodation

### GROUND FLOOR

Entrance Porch  
Lounge: 14'3 x 11'4 (4.35m x 3.46m)  
Dining Area: 8'6 x 8'1 (2.59m x 2.47m)  
Kitchen: 8'5 x 8'5 (2.57m x 2.57m)

### FIRST FLOOR

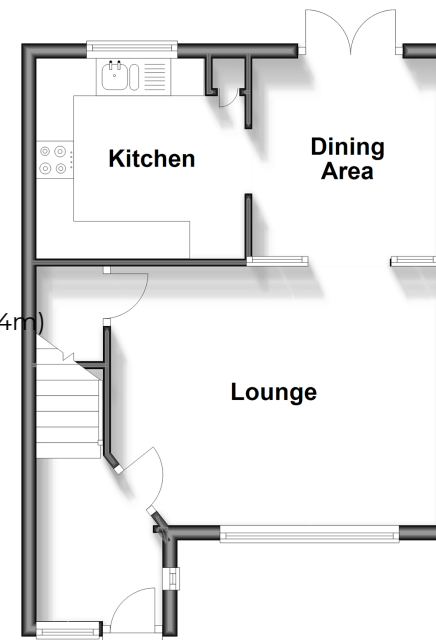
Landing  
Bedroom 1: 10'3 x 9'7 (3.13m x 2.92m)  
Bedroom 2: 10'6 x 8'6 (3.20m x 2.59m)  
Bedroom 3/Study: 8'6 (2.59m) x 7'7 (2.31m) narrowing to 3'9 (1.14m)  
Bathroom

### OUTSIDE

Front & Rear Gardens  
Garage En-Bloc  
Driveway

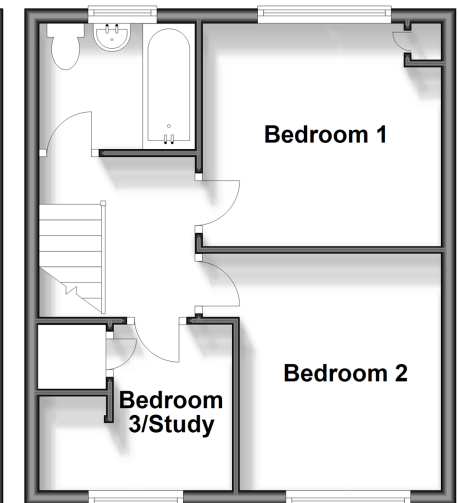
### Ground Floor

Approx. 35.8 sq. metres (385.8 sq. feet)



### First Floor

Approx. 33.7 sq. metres (362.5 sq. feet)



**Call Ashford - 01233 639531 ■ [wardsofkent.co.uk](http://wardsofkent.co.uk)**

■ Legal advice should be taken to verify fixtures/fittings, planning, alterations and/or lease details  
■ Through a Homewise Home For Life Plan people aged 60+ can secure this property for up to 59% less, by purchasing a Lifetime Lease.

■ Appliances & services are untested, dimensions are approximate and floor plans are not to scale