



OVER 60?

Secure this property
for up to **59% less!**

Price

£575,000

Freehold

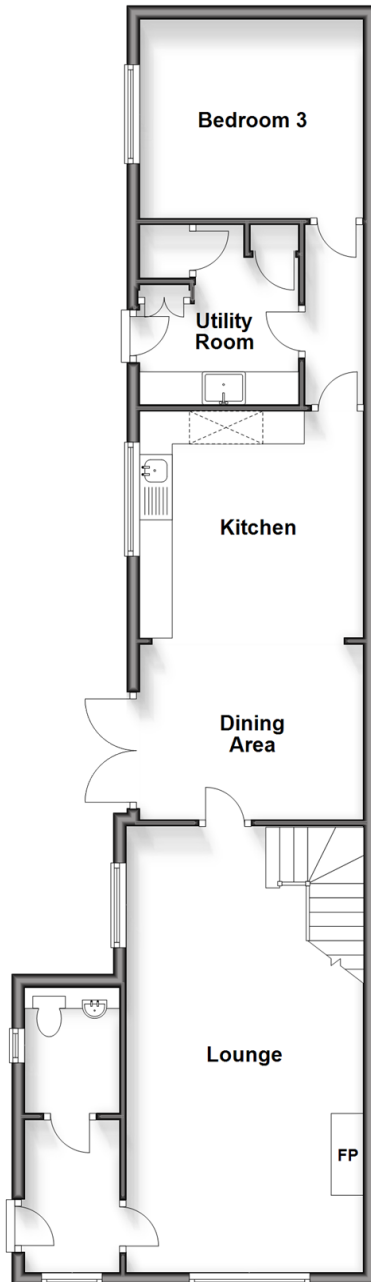
3x  1x  1x 

**Westwell, Ashford, Kent,
TN25**

Wards
Helping you move forwards

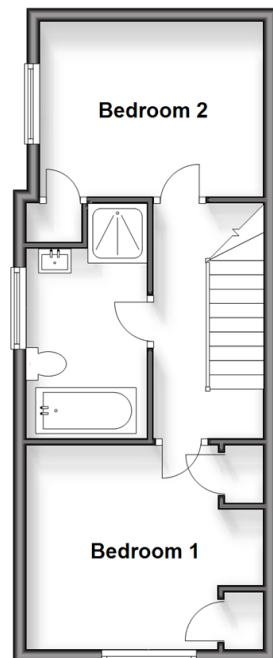
Ground Floor

Approx. 74.2 sq. metres (798.2 sq. feet)



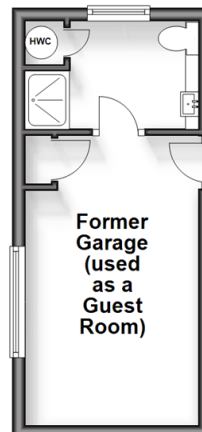
First Floor

Approx. 34.5 sq. metres (371.0 sq. feet)



Outbuilding

Approx. 16.5 sq. metres (177.5 sq. feet)



Accommodation

GROUND FLOOR

Hallway

Cloakroom

Lounge: 22'2 x 11'11 (6.76m x 3.63m)

Kitchen/Dining Area: 21'8 x 10'7 (6.61m x 3.23m)

Utility Room: 8'11 x 7'5 (2.72m x 2.26m)

Bedroom 3: 10'9 x 9'10 (3.28m x 3.00m)

FIRST FLOOR

Landing

Bedroom 1: 11'2 x 8'4 (3.41m x 2.54m)

Bedroom 2: 10'8 x 10'6 (3.25m x 3.20m)

Bathroom

OUTSIDE

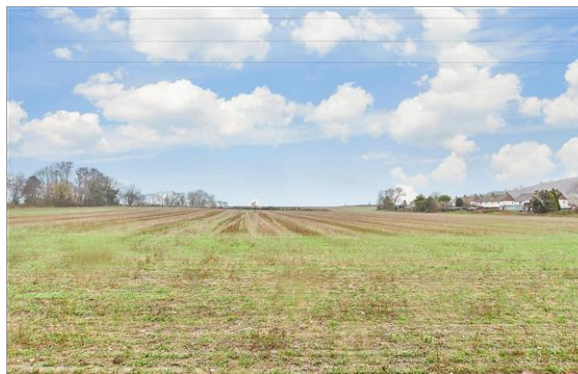
Front & Rear Garden

Two Garages

OUT BUILDING

Former Garage (Guest Bedroom): 14'4 x 8'7 (4.37m x 2.62m)

Shower Room



Main features

- Charming and spacious cottage
- Popular village location of Westwell
- Off-road parking to the front including 2 garages
- Guest room to the side that can be used by visiting family members
- Stunning countryside views to the rear, which will provide the perfect backdrop while sitting in the beautiful rear garden



Nearest Schools

Primary Schools: Challock Primary 2.2 miles, Kennington C of E Junior School 2.2 miles, Phoenix Community Primary 2.4 miles. Secondary Schools: The Towers School 2.0 miles, Goldwyn Community Special School 2.4 miles, Highworth Grammar School for Girls 2.6 miles.



Transport Information

Train Stations: Charing 2.6 miles, Ashford International 3.4 miles, Wye 3.6 miles



Address

Westwell, Ashford, Kent, TN25



Directions

For directions to this property please contact us.



Call Ashford Branch 01233 639531 ■ wardsofkent.co.uk



- If buying to let, the energy rating will need to be improved to at least 'E' rating before you can let the property
- Appliances & services are untested, dimensions are approximate and floor plans are not to scale

- Legal advice should be taken to verify fixtures/fittings, planning, alterations and/or lease details
- Through a Homewise Home For Life Plan people aged 60+ can secure this property for up to 59% less, by purchasing a Lifetime Lease.



12238344/20240108/MB/KW