



Price
£280,000

Freehold

2x  1x  1x 

**Sir Henry Brackenbury
Road, Ashford, Kent,
TN23**

OVER 60?

Secure this property
for up to **59% less!**

Wards
Helping you move forwards



Main features

- **Car port**
- **Spacious Lounge**
- **Excellent first-time buy or investment**
- **Easy access to mainline train station and bus routes**
- **Local amenities within walking distance, and good schools**

Accommodation

GROUND FLOOR

Hallway
Cloakroom
Kitchen: 10'5 x 6'2 (3.18m x 1.88m)
Lounge: 13'9 x 12'9 (4.19m x 3.89m)

FIRST FLOOR

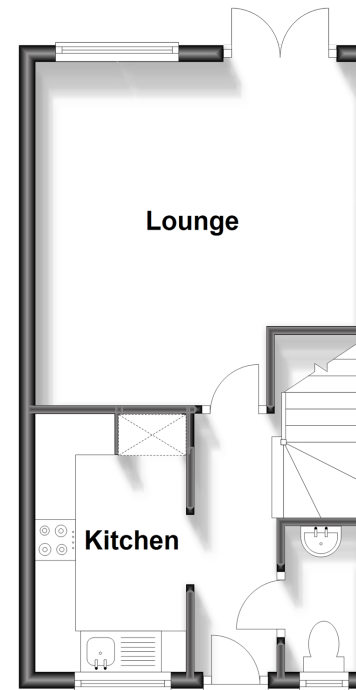
Landing
Bedroom 1: 13'1 x 12'9 (3.99m x 3.89m)
Bedroom 2: 10'9 x 6'2 (3.28m x 1.88m)
Bathroom

OUTSIDE

Front & Rear Gardens
Car Port

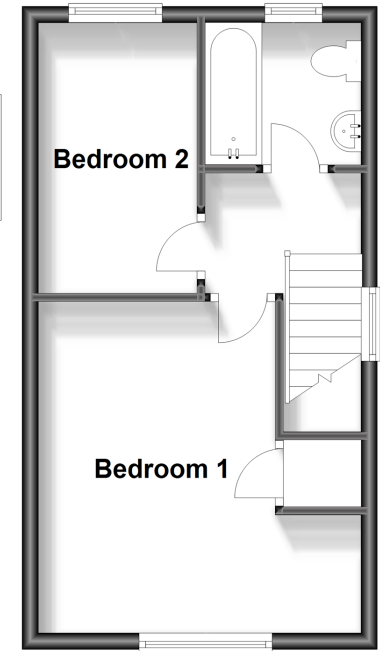
Ground Floor

Approx. 29.6 sq. metres (319.0 sq. feet)



First Floor

Approx. 29.6 sq. metres (319.0 sq. feet)



Call Ashford - 01233 639531 ■ wardsofkent.co.uk

■ Legal advice should be taken to verify fixtures/fittings, planning, alterations and/or lease details
■ Through a Homewise Home For Life Plan people aged 60+ can secure this property for up to 59% less, by purchasing a Lifetime Lease.

■ Appliances & services are untested, dimensions are approximate and floor plans are not to scale

