



**Price**  
**£275,000**

**Freehold**

3x  1x  1x 

**Beaver Lane, Ashford,  
Kent, TN23**

**OVER 60?**

Secure this property  
for up to **59% less!**



**Video Tour available**

**Wards**  
Helping you move forwards





## Main features

- Open plan kitchen/diner perfect for entertaining
- Well-presented throughout with neutral decor
- Good size bedrooms
- Low-maintenance rear garden with garden shed
- Situated in South Ashford, with primary and secondary schools a short walk away for young families

## Accommodation

### GROUND FLOOR

Entrance Hall

Lounge: 18'0 x 10'6 (5.49m x 3.20m)

Kitchen/Diner: 14'0 x 8'9 (4.27m x 2.67m)

Utility : 9'4 x 7'3 (2.85m x 2.21m)

### FIRST FLOOR

Landing

Bedroom 1: 13'8 x 9'1 (4.17m x 2.77m)

Bedroom 2: 10'9 x 9'1 (3.28m x 2.77m)

Bedroom 3: 10'5 x 7'0 (3.18m x 2.14m)

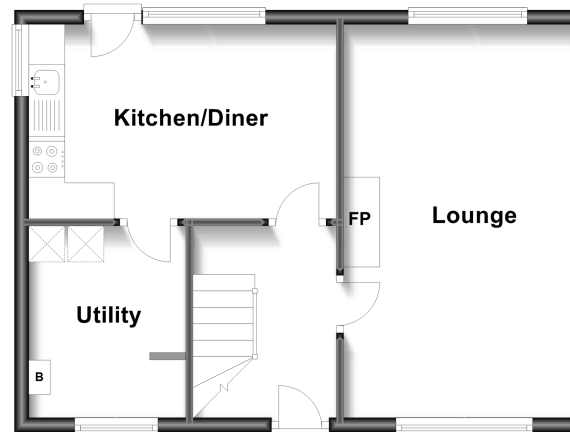
Bathroom

### OUTSIDE

Front & Rear Gardens

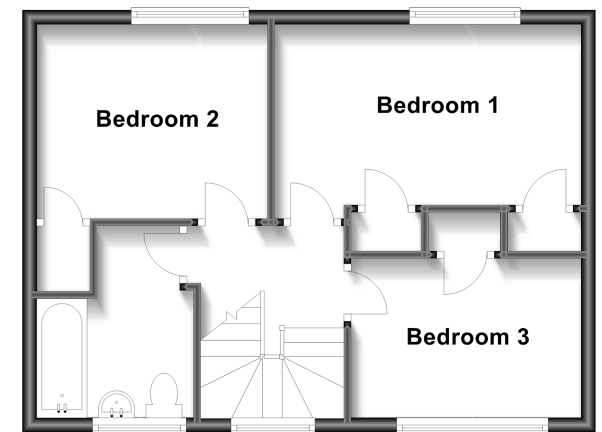
### Ground Floor

Approx. 41.5 sq. metres (446.6 sq. feet)



### First Floor

Approx. 41.5 sq. metres (446.6 sq. feet)



**Call Ashford - 01233 639531 ■ [wardsofkent.co.uk](http://wardsofkent.co.uk)**

- Legal advice should be taken to verify fixtures/fittings, planning, alterations and/or lease details
- Through a Homewise Home For Life Plan people aged 60+ can secure this property for up to 59% less, by purchasing a Lifetime Lease.

- Appliances & services are untested, dimensions are approximate and floor plans are not to scale



12241240/20230207/MB/NF