



OVER 60?

Secure this property
for up to **59% less!**

Price

£450,000

Freehold

4x  2x  1x 

**Goldwell House, Roman
Road, Aldington,
Ashford, Kent, TN25**

Wards
Helping you move forwards



Main features

- Chain free property in a village location
- Beautiful countryside setting
- Lots of potential to extend, subject to planning
- Multiple outbuildings, perfect to create the ideal office
- Within walking distance to a good primary school, the local pub, farm shop and butchers/convenience store

Accommodation

GROUND FLOOR

Entrance Porch
Hallway
Shower Room
Lounge: 14'3 x 12'4 (4.35m x 3.76m)
Kitchen: 13'1 x 8'1 (3.99m x 2.47m)
Dining Area: 12'5 x 8'6 (3.79m x 2.59m)
Utility Room: 5'6 x 4'7 (1.68m x 1.40m)
Conservatory: 12'4 x 8'2 (3.76m x 2.49m)

FIRST FLOOR

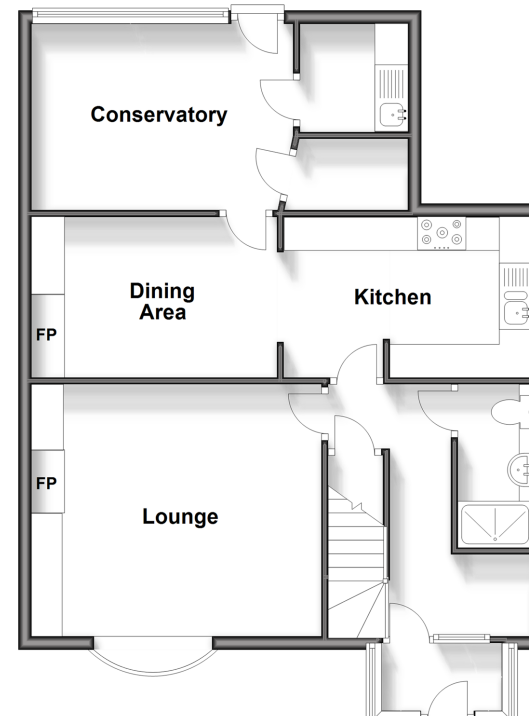
Landing
Bedroom 1: 13'3 x 9'7 (4.04m x 2.92m)
Bedroom 2: 11'0 x 8'9 (3.36m x 2.67m)
Bedroom 3: 8'6 x 7'9 (2.59m x 2.36m)
Bedroom 4 : 9'6 x 7'7 (2.90m x 2.31m)
Bathroom

OUTSIDE

Front & Rear Gardens
Garage
Driveway

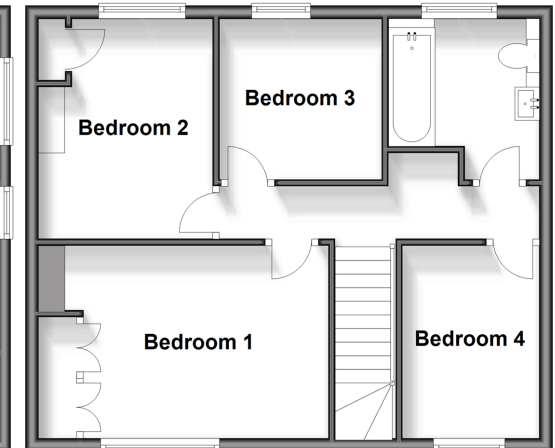
Ground Floor

Approx. 66.5 sq. metres (715.9 sq. feet)



First Floor

Approx. 47.7 sq. metres (513.5 sq. feet)



Call Ashford - 01233 639531 ■ wardsofkent.co.uk

■ Legal advice should be taken to verify fixtures/fittings, planning, alterations and/or lease details
■ Through a Homewise Home For Life Plan people aged 60+ can secure this property for up to 59% less, by purchasing a Lifetime Lease.

■ Appliances & services are untested, dimensions are approximate and floor plans are not to scale



12241478/20240402/CF/CF