



Price

£100,000

Leasehold

1x  1x  1x 

**Windsor Court, Hoxton
Close, Ashford, Kent,
TN23**

OVER 60?

Secure this property
for up to **59% less!**



Video Tour available

Wards
Helping you move forwards



Main features

- Ground floor apartment with it's own private patio
- Exclusive for over 55's retirement complex with gated parking for residents
- Wonderfully maintained communal areas and gardens
- Lift access
- Chain free

Accommodation

GROUND FLOOR

Hallway

Kitchen/Lounge: 18'11 x 12'9 (5.77m x 3.89m)

Bathroom: 9'4 x 5'6 (2.85m x 1.68m)

Large Airing Cupboard

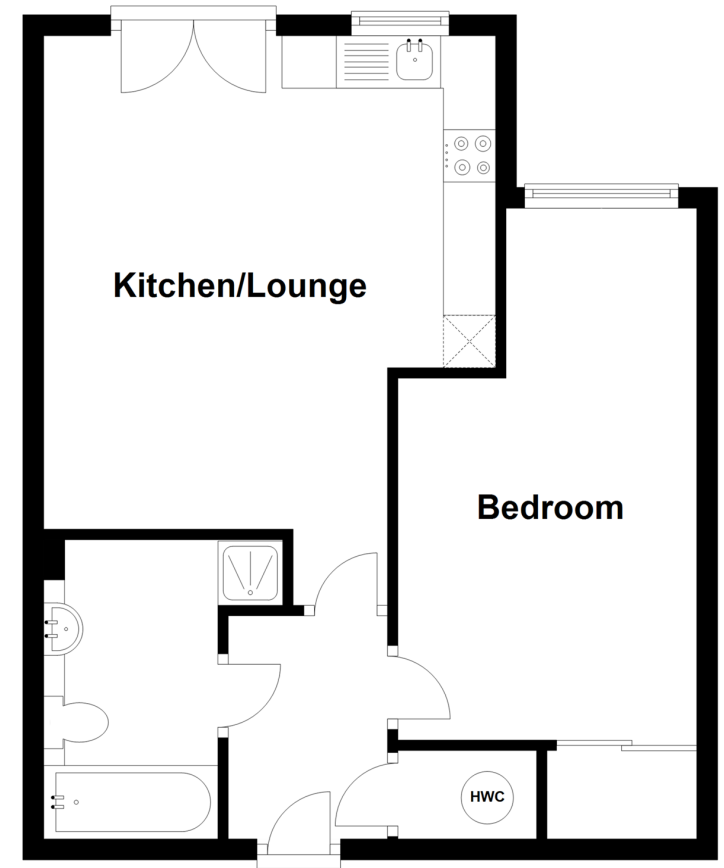
Bedroom: 18'10 x 15'12 (5.74m x 4.88m)

OUTSIDE

Gated Parking for Residents
Communal Gardens

Ground Floor

Approx. 44.8 sq. metres (481.8 sq. feet)



Call Ashford - 01233 639531 ■ wardsofkent.co.uk

- Legal advice should be taken to verify fixtures/fittings, planning, alterations and/or lease details
- Appliances & services are untested, dimensions are approximate and floor plans are not to scale
- Through a Homewise Home For Life Plan people aged 60+ can secure this property for up to 59% less, by purchasing a Lifetime Lease.



12241605/20230315/JJ/RM