

**OVER 60?**

Secure this property  
for up to **59% less!**



**Price**

**£825,000**

**Freehold**

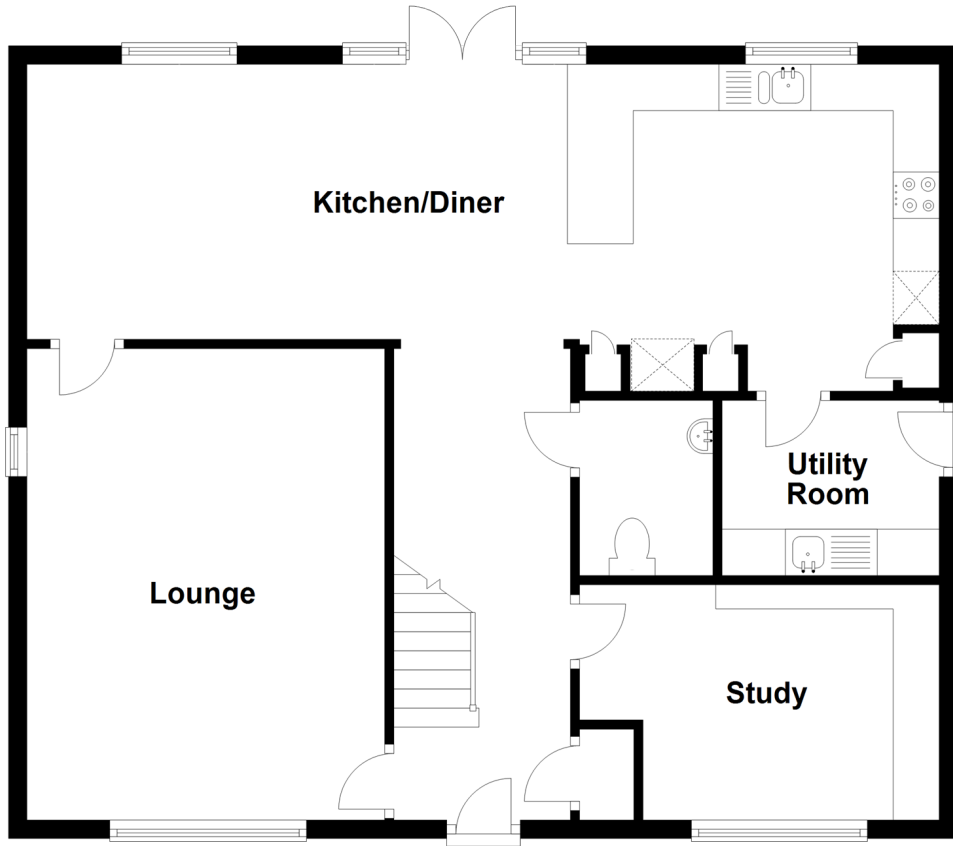
5x  2x  1x 

Ramsfield, Wye, Ashford, Kent, TN25

*Wards*  
Helping you move forwards

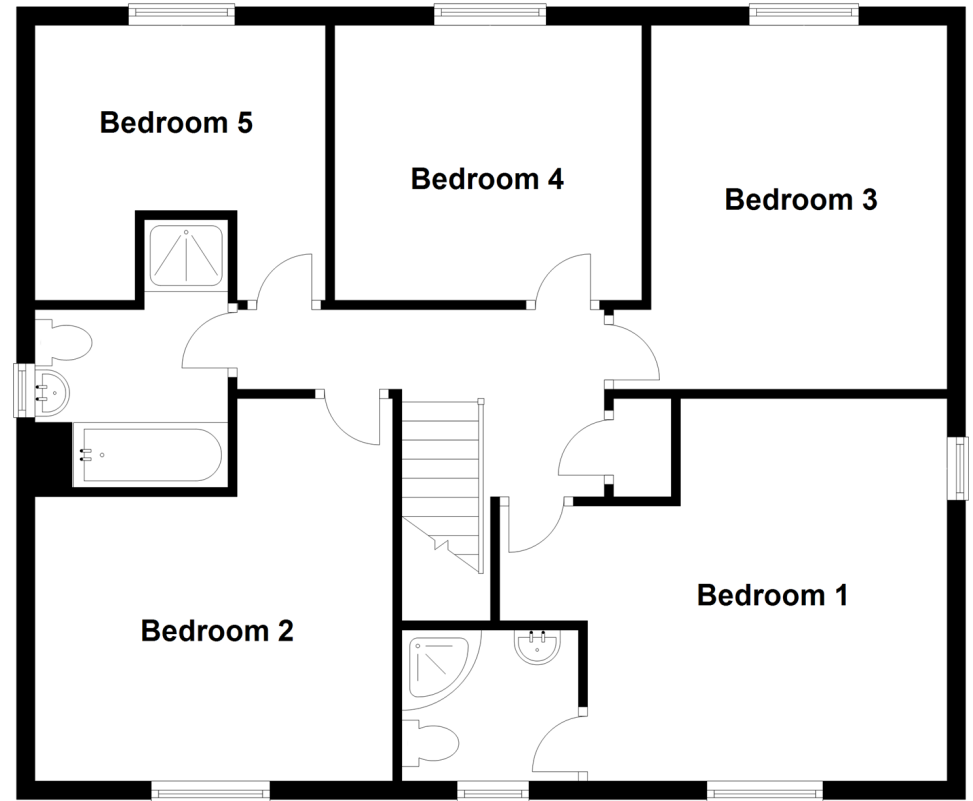
## Ground Floor

Approx. 81.0 sq. metres (872.0 sq. feet)



## First Floor

Approx. 81.7 sq. metres (879.7 sq. feet)



## Accommodation

### GROUND FLOOR

Hallway  
Study: 10'6 x 8'1 (3.20m x 2.47m)  
Cloakroom  
Utility Room: 7'9 x 6'4 (2.36m x 1.93m)  
Kitchen/Diner: 32'6 x 11'7 (9.91m x 3.53m)  
Lounge: 16'8 x 11'7 (5.08m x 3.53m)

### Landing

Bedroom 1: 13'6 x 12'10 (4.12m x 3.91m)  
En-Suite Shower Room  
Bedroom 2: 13'6 x 12'8 (4.12m x 3.86m)  
Bedroom 3: 13'2 x 10'4 (4.02m x 3.15m)  
Bedroom 4: 11'2 x 9'6 (3.41m x 2.90m)  
Bedroom 5: 10'4 x 9'5 (3.15m x 2.87m)  
Bathroom

### FIRST FLOOR

### OUTSIDE

Detached Double Garage  
Driveway  
Front & Rear Gardens





## Main features

- Air conditioning throughout the first floor
- Detached double garage with electric car charging point
- Beautifully presented with a ground floor office
- Moments from Wye Station and located in the heart of this idyllic Kent village
- A private corner plot with picturesque views across the Wye Crown and Kent Downs



### Nearest Schools

Primary Schools: Lady Joanna Thornhill Endowed Primary 0.1 miles, Brook Community Primary 2.0 miles. Secondary Schools: Wye School 0.1 miles, The Norton Knatchbull School 3.1 miles, Ashford School 3.3 miles



### Transport Information

Train Stations: Wye 0.1 miles, Ashford International 3.7 miles, Charing 6.4 miles



### Address

Ramsfield, Wye, Ashford, Kent, TN25



### Directions

For directions to this property please contact us.





Call Ashford Branch 01233 639531 ■ [wardsofkent.co.uk](http://wardsofkent.co.uk)



- Legal advice should be taken to verify fixtures/fittings, planning, alterations and/or lease details
- Appliances & services are untested, dimensions are approximate and floor plans are not to scale
- Through a Homewise Home For Life Plan people aged 60+ can secure this property for up to 59% less, by purchasing a Lifetime Lease.



12241608/20230207/MB/NF