



Price
£350,000

Freehold

3x  2x  1x 

**Violet Way, Kingsnorth,
Ashford, Kent, TN23**

OVER 60?

You could get up to
59% off the price!*

Wards
Helping you move forwards



Main features

- Immaculately presented throughout with large kitchen diner
- Garage and two allocated parking spaces
- En-suite shower room to bedroom
- Low maintenance landscaped garden
- Fantastic location, close to schools, supermarket and parks

Accommodation

GROUND FLOOR

Kitchen/Diner: 15'7 x 10'9 (4.75m x 3.28m)

Inner Hall

Cloakroom

Lounge: 17'4 (5.29m) narrowing to 15'2 (4.63m) x 9'2 (2.80m)

FIRST FLOOR

Landing

Bedroom 1: 10'4 x 9'7 (3.15m x 2.92m)

En-Suite Shower Room

Bedroom 2: 12'6 x 6'8 (3.81m x 2.03m)

Bedroom 3: 12'6 x 8'2 (3.81m x 2.49m)

Bathroom

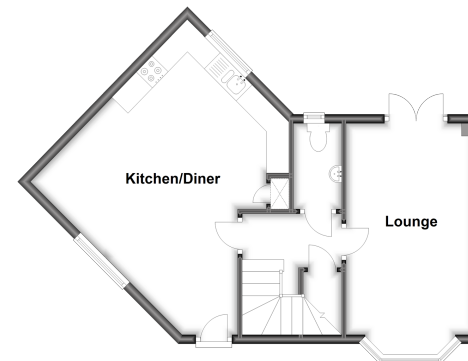
OUTSIDE

Garage & Off Road Parking

Landscape Rear Garden

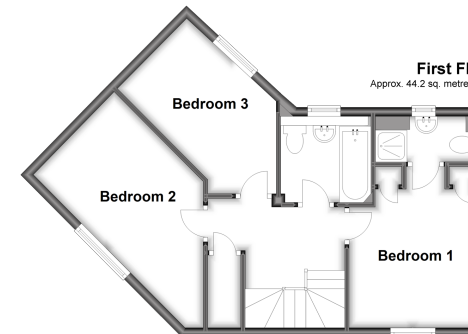
Ground Floor

Approx. 44.8 sq. metres (482.5 sq. feet)



First Floor

Approx. 44.2 sq. metres (476.2 sq. feet)



Call Ashford - 01233 639531 ■ wardsofkent.co.uk

- Legal advice should be taken to verify fixtures/fittings, planning, alterations and/or lease details
- Our Homewise partnership offer a 'Home for Life' plan to buyers over 60, granting a lifetime lease for your protection and reducing the purchase price by up to 59%

- Appliances & services are untested, dimensions are approximate and floor plans are not to scale



12241770/20220809/RM/RM