



OVER 60?

You could get up to
59% off the price!*

Price
£290,000

Freehold

3x  1x  2x 

**Glover Road,
Willesborough, Ashford,
Kent, TN24**

Wards
Helping you move forwards



Main features

- Open plan lounge/dining area
- Immaculately presented throughout
- Fantastic sized rear garden
- Large garden shed with potential office space for those working from home
- Located a short walk from local schools, town centre and Ashford International train station

Accommodation

GROUND FLOOR

Entrance Hall

Lounge: 13'6 x 10'2 (4.12m x 3.10m)

Dining Area: 12'7 x 12'4 (3.84m x 3.76m)

Kitchen: 9'1 x 7'5 (2.77m x 2.26m)

Conservatory/Utility: 10'8 x 5'5 (3.25m x 1.65m)

Bathroom

FIRST FLOOR

Landing

Bedroom 1: 10'2 x 10'2 (3.10m x 3.10m)

Bedroom 2: 11'9 x 6'4 (3.58m x 1.93m)

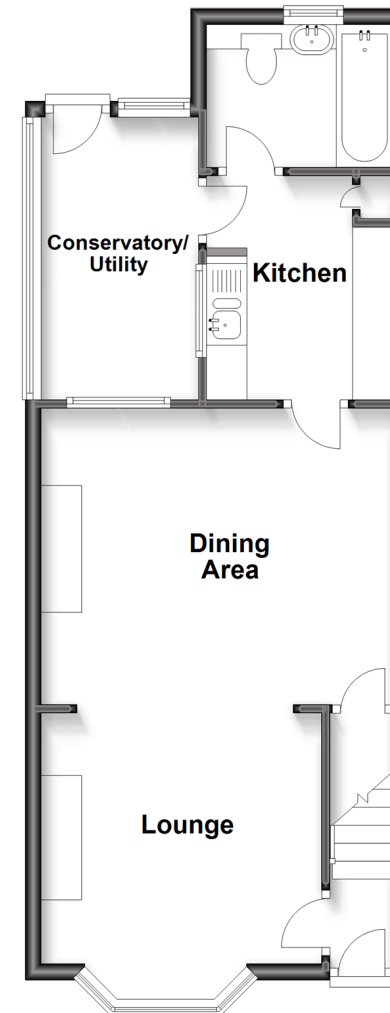
Bedroom 3: 9'9 x 6'9 (2.97m x 2.06m)

OUTSIDE

Front & Rear Gardens

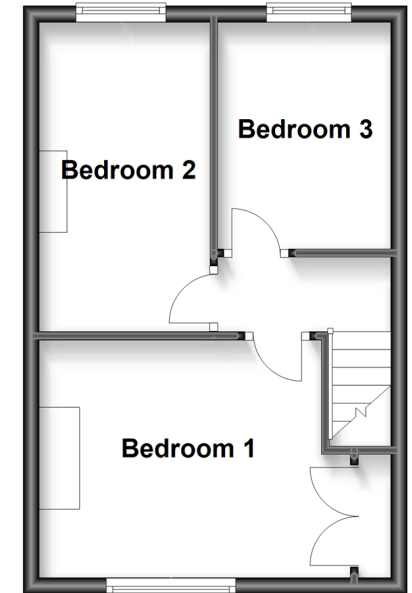
Ground Floor

Approx. 48.0 sq. metres (516.7 sq. feet)



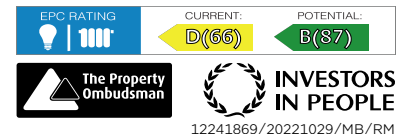
First Floor

Approx. 29.6 sq. metres (319.0 sq. feet)



Call Ashford - 01233 639531 ■ wardsof Kent.co.uk

- Legal advice should be taken to verify fixtures/fittings, planning, alterations and/or lease details
- Appliances & services are untested, dimensions are approximate and floor plans are not to scale
- Our Homewise partnership offer a 'Home for Life' plan to buyers over 60, granting a lifetime lease for your protection and reducing the purchase price by up to 59%



12241869/20221029/MB/RM