



OVER 60?

Secure this property
for up to **59% less!**

Price

£280,000

Freehold

2x  1x  1x 

**Almond Close, Orchard
Heights, Orchard
Heights, Ashford, Kent,
TN25**

Wards
Helping you move forwards



Main features

- Set in a popular Orchard Heights development
- Allocated parking for two cars
- No onward chain
- Close to local town and Ashford International station
- Modern kitchen with Neff microwave/oven, 5 ring induction hob and extractor
- Fitted washing machine, dishwasher and fridge/freezer
- Bedroom 2 will accommodate a double bed and has a fitted wardrobe

Accommodation

GROUND FLOOR

Lounge: 14'1 x 13'3 (4.30m x 4.04m)
 Kitchen: 11'2 x 8'1 (3.41m x 2.47m)
 Conservatory: 11'2 x 10'2 (3.41m x 3.10m)

FIRST FLOOR

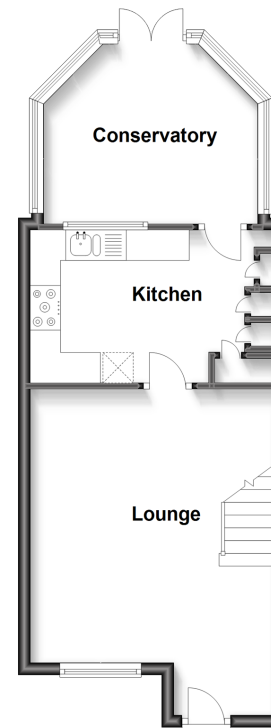
Landing
 Bedroom 1: 9'5 x 7'1 (2.87m x 2.16m)
 Bedroom 2: 13'2 x 10'8 (4.02m x 3.25m)
 Bathroom

OUTSIDE

Rear Garden
 Driveway

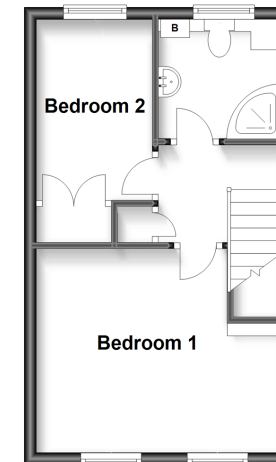
Ground Floor

Approx. 39.9 sq. metres (429.4 sq. feet)



First Floor

Approx. 28.7 sq. metres (308.5 sq. feet)



Call Ashford - 01233 639531 ■ wardsofkent.co.uk

■ Legal advice should be taken to verify fixtures/fittings, planning, alterations and/or lease details
 ■ Through a Homewise Home For Life Plan people aged 60+ can secure this property for up to 59% less, by purchasing a Lifetime Lease.

■ Appliances & services are untested, dimensions are approximate and floor plans are not to scale