



Price
£290,000

Freehold

3x  2x  1x 

**Weavers Way, Ashford,
Kent, TN23**

OVER 60?

Secure this property
for up to **59% less!**



Video Tour available

Wards
Helping you move forwards



Main features

- Renovated cosmetically throughout to a high standard
- Modern, L-shaped kitchen/dining area makes a perfect social setting
- Beautiful new bathroom & en-suite shower room with oak vanity units
- Fully re-plastered, and new double glazing installed throughout
- Landscaped rear garden with a large shed, installed with electric points and lighting and potential for off road parking (Subject to Planning Consent)

Accommodation

GROUND FLOOR

Hallway

Lounge: 14'0 x 11'10 (4.27m x 3.61m)

Kitchen: 14'1 x 7'9 (4.30m x 2.36m)

Bathroom

Dining Area: 8'10 x 7'7 (2.69m x 2.31m)

FIRST FLOOR

Landing

Bedroom 1: 10'9 x 9'0 (3.28m x 2.75m)

En-Suite Shower Room

Bedroom 3: 6'8 x 6'1 (2.03m x 1.86m)

Bedroom 2: 12'0 x 7'10 (3.66m x 2.39m)

OUTSIDE

Front & Rear Gardens

Garden Shed

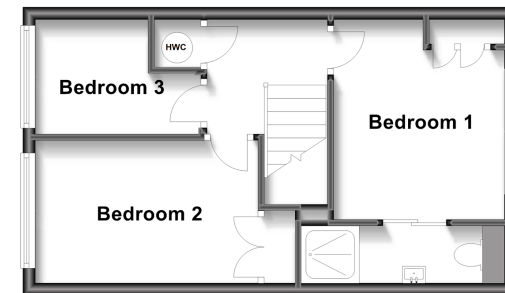
Ground Floor

Approx. 41.5 sq. metres (446.6 sq. feet)



First Floor

Approx. 32.9 sq. metres (353.8 sq. feet)



Call Ashford - 01233 639531 ■ wardsofkent.co.uk

■ Legal advice should be taken to verify fixtures/fittings, planning, alterations and/or lease details
 ■ Through a Homewise Home For Life Plan people aged 60+ can secure this property for up to 59% less, by purchasing a Lifetime Lease.

■ Appliances & services are untested, dimensions are approximate and floor plans are not to scale



12241918/20230829/MB/NF