



**Price**  
**£475,000**

**Freehold**

4x  3x  2x 

**Atkinson Walk,  
Kennington, Ashford,  
Kent, TN24**

**OVER 60?**

Secure this property  
for up to **59% less!**

*Wards*  
Helping you move forwards





## Main features

- **Spacious family house on the outskirts of Ashford town centre and close to the William Harvey Hospital**
- **En-suites to two bedrooms**
- **Well maintained large rear garden**
- **Tucked away in a quiet cul-de-sac but close to local amenities**
- **Good size bedrooms**

## Accommodation

### GROUND FLOOR

Hallway  
 Lounge: 17'4 x 12'2 (5.29m x 3.71m)  
 Dining Room: 11'10 x 9'1 (3.61m x 2.77m)  
 Utility: 7'7 x 5'8 (2.31m x 1.73m)  
 Kitchen: 13'8 x 9'9 (4.17m x 2.97m)  
 Cloakroom  
 Storage Room: 13'9 x 8'3 (4.19m x 2.52m)

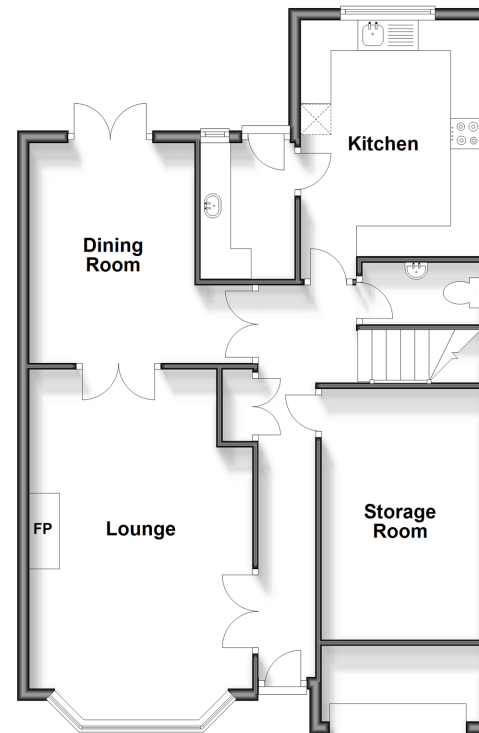
### FIRST FLOOR

Landing  
 Bathroom  
 Bedroom 1: 14'4 x 8'7 (4.37m x 2.62m)  
 En-Suite Bathroom  
 Bedroom 2: 13'6 x 11'9 (4.12m x 3.58m)  
 En-Suite Shower Room  
 Bedroom 4: 10'6 x 9'1 (3.20m x 2.77m)  
 Bedroom 3: 11'1 x 6'11 (3.38m x 2.11m)

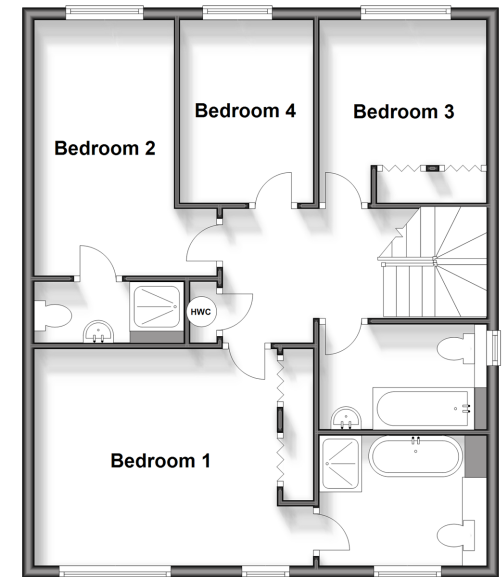
### OUTSIDE

Front & Rear Gardens  
 Garage & Driveway

**Ground Floor**  
 Approx. 75.4 sq. metres (811.1 sq. feet)



**First Floor**  
 Approx. 67.6 sq. metres (727.5 sq. feet)



**Call Ashford - 01233 639531 ■ [wardsofkent.co.uk](http://wardsofkent.co.uk)**

■ Legal advice should be taken to verify fixtures/fittings, planning, alterations and/or lease details  
 ■ Through a Homewise Home For Life Plan people aged 60+ can secure this property for up to 59% less, by purchasing a Lifetime Lease.

■ Appliances & services are untested, dimensions are approximate and floor plans are not to scale