



OVER 60?

Secure this property
for up to **59% less!**

Price

£225,000

Freehold

3x  1x  1x 

**Bredgar Close, Ashford,
Kent, TN23**

Wards
Helping you move forwards



Main features

- Chain-free!
- An excellent investment opportunity
- Well-proportioned bedrooms
- In need of modernisation
- Single garage and courtyard garden

Accommodation

GROUND FLOOR

Porch

Lounge: 20'2 x 11'8 (6.15m x 3.56m)

Kitchen: 20'2 x 11'4 (6.15m x 3.46m)

FIRST FLOOR

Landing

Bathroom

Bedroom 2: 12'2 x 8'11 (3.71m x 2.72m)

Bedroom 1: 11'11 x 11'10 (3.63m x 3.61m)

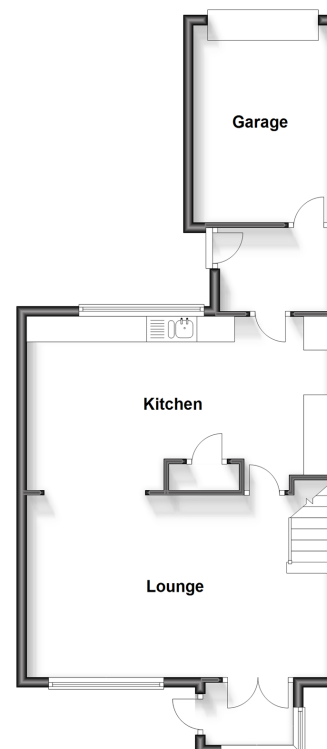
Bedroom 3: 7'10 (2.39m) narrowing to 5'11 (1.80m) x 7'2 (2.19m)

OUTSIDE

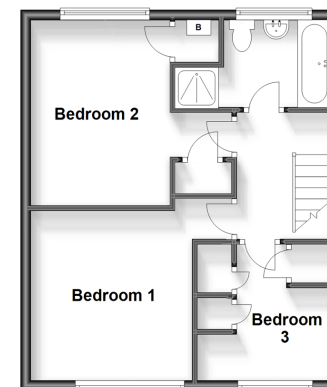
Garage

Front & Rear Gardens

Ground Floor
Approx. 59.9 sq. metres (634.3 sq. feet)



First Floor
Approx. 42.3 sq. metres (455.4 sq. feet)



Call Ashford - 01233 639531 ■ wardsofkent.co.uk

■ Legal advice should be taken to verify fixtures/fittings, planning, alterations and/or lease details
■ Through a Homewise Home For Life Plan people aged 60+ can secure this property for up to 59% less, by purchasing a Lifetime Lease.

■ Appliances & services are untested, dimensions are approximate and floor plans are not to scale



12242057/20230829/MB/NF