



OVER 60?

Secure this property
for up to **59% less!**

Price

£575,000

Freehold

4x  2x  1x 

**Brambling Avenue,
Finberry, Ashford, Kent,
TN25**

Wards
Helping you move forwards



Main features

- Immaculately presented family house
- Work from home with ease from the large office
- Modern kitchen/diner - great for entertaining
- Ample parking plus a double garage
- Local amenities and transport links located right on your doorstep

Accommodation

GROUND FLOOR

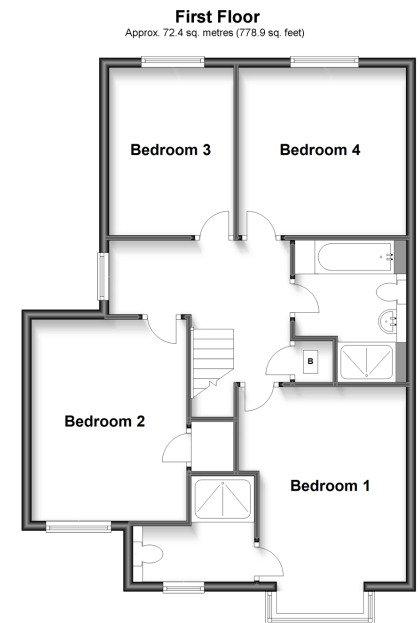
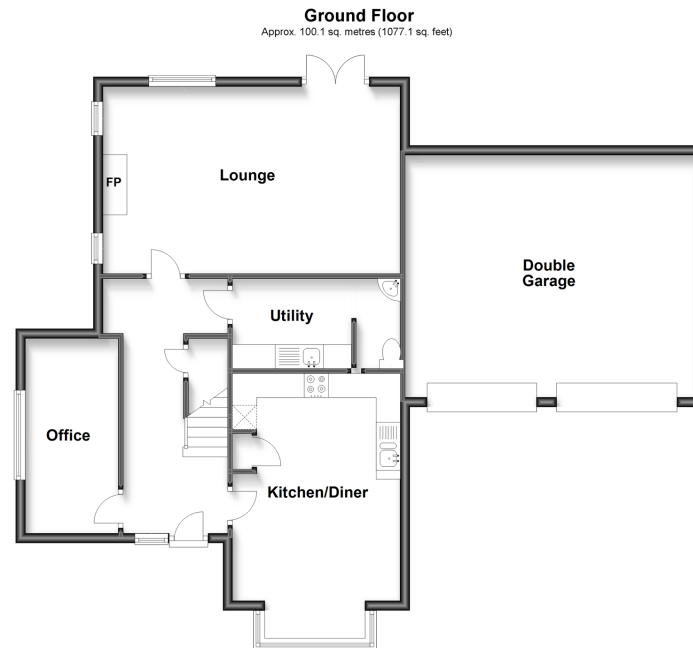
Hallway
 Kitchen/Diner: 18'3 x 11'6 (5.57m x 3.51m)
 Office: 13'2 x 6'11 (4.02m x 2.11m)
 Utility Room
 Cloakroom
 Lounge: 19'8 x 12'9 (6.00m x 3.89m)

FIRST FLOOR

Landing
 Bedroom 1: 15'9 x 11'6 (4.80m x 3.51m)
 En-Suite Shower Room
 Bedroom 2: 13'1 x 10'10 (3.99m x 3.30m)
 Bedroom 3: 11'6 x 11'5 (3.51m x 3.48m)
 Bedroom 4: 11'5 x 7'8 (3.48m x 2.34m)
 Bathroom

OUTSIDE

Rear Garden
 Double Garage & Driveway



Call Ashford - 01233 639531 ■ wardsofkent.co.uk

■ Legal advice should be taken to verify fixtures/fittings, planning, alterations and/or lease details
 ■ Through a Homewise Home For Life Plan people aged 60+ can secure this property for up to 59% less, by purchasing a Lifetime Lease.

■ Appliances & services are untested, dimensions are approximate and floor plans are not to scale