



Price
£280,000

Leasehold

2x  2x  1x 

**Kenmore Place, Leacon
Road, Ashford, Kent,
TN23**

OVER 60?

Secure this property
for up to **59% less!**

Wards
Helping you move forwards



Main features

- Modern apartment located in the centre of Ashford town
- Fourth-floor position with stunning views over Victoria Park
- Contemporary and stylish design with high-quality fixtures and fittings
- Ideal location for commuters, with excellent transport links to London and nearby towns
- Open-plan living area, fully-fitted kitchen, and generously sized bedrooms

Accommodation

FOURTH FLOOR

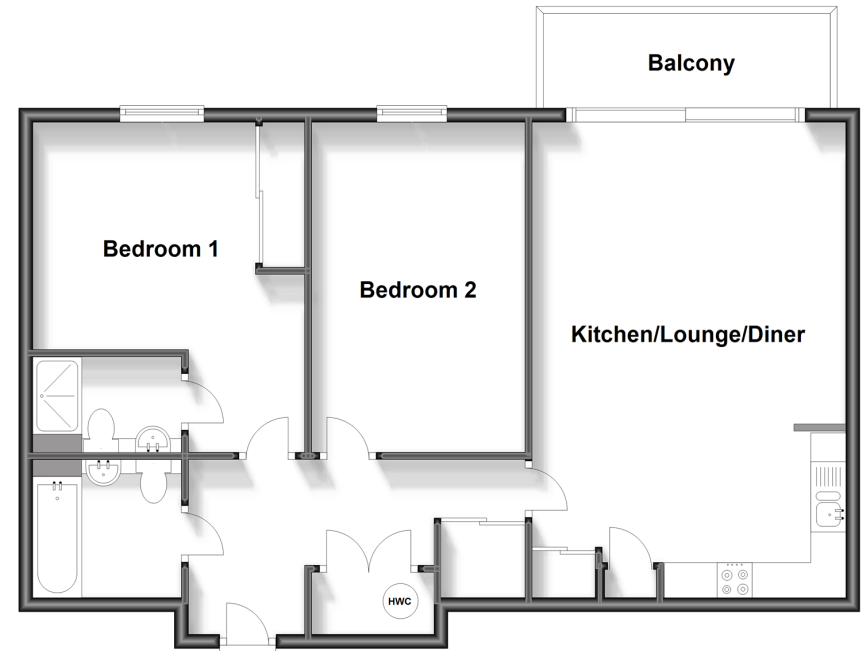
Hallway
 Bathroom
 Bedroom 1: 15'4 (4.68m) narrowing to 10'7 (3.23m) x 12'8 (3.86m)
 En-Suite Shower Room
 Bedroom 2: 15'5 x 10'1 (4.70m x 3.08m)
 Kitchen/Lounge/Diner: 22'3 x 14'7 (6.79m x 4.45m)
 Balcony

OUTSIDE

Allocated Parking Space

Fourth Floor

Approx. 80.2 sq. metres (863.0 sq. feet)



Call Ashford - 01233 639531 ■ wardsofkent.co.uk

■ Legal advice should be taken to verify fixtures/fittings, planning, alterations and/or lease details
 ■ Through a Homewise Home For Life Plan people aged 60+ can secure this property for up to 59% less, by purchasing a Lifetime Lease.

■ Appliances & services are untested, dimensions are approximate and floor plans are not to scale