



OVER 60?

Secure this property
for up to **59% less!**

Price

£385,000

Freehold

3x  2x  2x 

**Forest Avenue, Ashford,
Kent, TN25**

Wards
Helping you move forwards



Main features

- Situated in the popular Orchard Heights estate
- Well-proportioned bedrooms
- Downstairs study separate from the lounge and kitchen/diner
- A beautiful kitchen/diner was installed following a garage conversion in 2018
- En-suite shower room and walk in wardrobe accompany bedroom 1

Accommodation

GROUND FLOOR

Hallway
 Study: 9'0 x 8'8 (2.75m x 2.64m)
 Cloakroom
 Lounge: 17'0 x 12'5 (5.19m x 3.79m)
 Kitchen/Diner: 21'9 x 8'4 (6.63m x 2.54m)

FIRST FLOOR

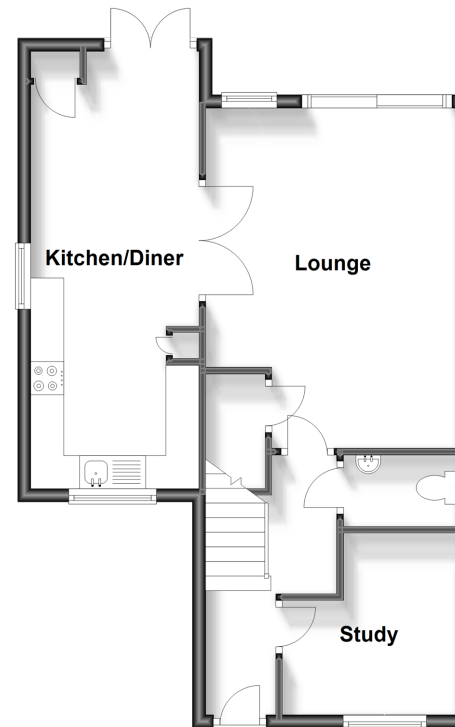
Landing
 Bedroom 2: 13'6 x 8'3 (4.12m x 2.52m)
 Bedroom 3: 12'5 x 8'6 (3.79m x 2.59m)
 Bathroom
 Bedroom 1: 12'5 x 9'9 (3.79m x 2.97m)
 Walk-In Wardrobe
 En-Suite Shower Room

OUTSIDE

Front & Rear Gardens
 Off-Road Parking

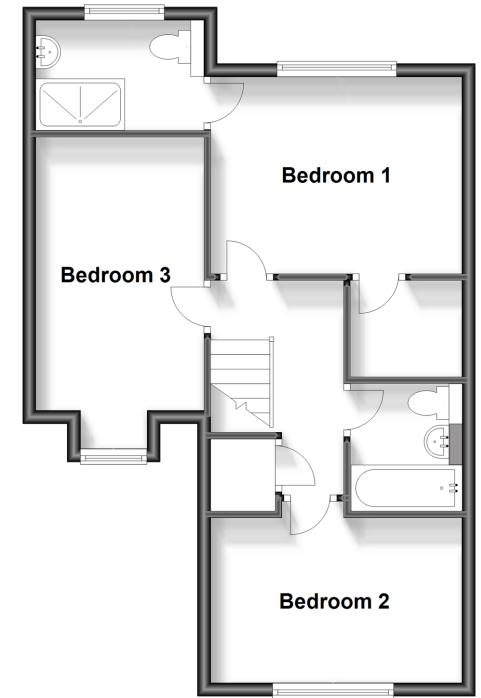
Ground Floor

Approx. 52.4 sq. metres (563.5 sq. feet)



First Floor

Approx. 51.1 sq. metres (549.8 sq. feet)



Call Ashford - 01233 639531 ■ wardsofkent.co.uk

■ Legal advice should be taken to verify fixtures/fittings, planning, alterations and/or lease details
 ■ Through a Homewise Home For Life Plan people aged 60+ can secure this property for up to 59% less, by purchasing a Lifetime Lease.

■ Appliances & services are untested, dimensions are approximate and floor plans are not to scale



12242092/20240406/JW/RB