



Price
£425,000

Freehold

4x  2x  1x 

**Beaver Lane, Ashford,
Kent, TN23**

OVER 60?

Secure this property
for up to **59% less!**

Wards
Helping you move forwards



Main features

- Large block-paved driveway with ample parking for several vehicles
- Located centrally to Ashford town and train station
- Rear extension provides an exceptional, open-plan kitchen/lounge/diner
- Well-proportioned bedrooms
- Modern bathroom suite and separate en-suite shower and dressing area to bedroom 1

Accommodation

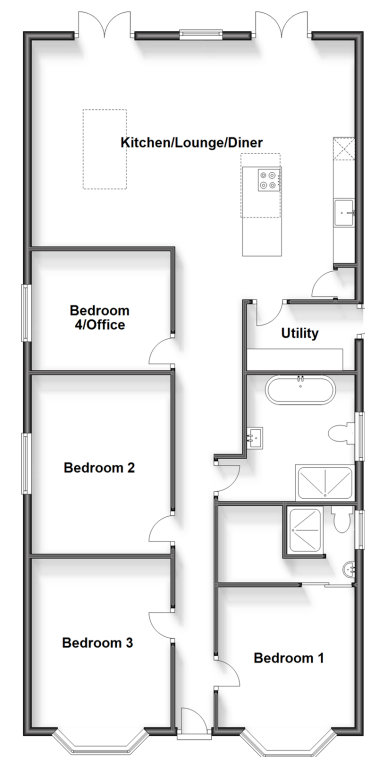
GROUND FLOOR

Hallway
 Bedroom 1: 12'7 x 10'6 (3.84m x 3.20m)
 En-Suite Shower Room
 Bathroom
 Utility Room: 8'4 x 5'0 (2.54m x 1.53m)
 Lounge/Kitchen/Diner: 24'8 (7.52m) x 19'11 (6.07m) narrowing to 15'10 (4.83m)
 Bedroom 4/Office: 10'8 x 8'10 (3.25m x 2.69m)
 Bedroom 2: 15'0 x 10'6 (4.58m x 3.20m)
 Bedroom 3: 13'3 x 10'5 (4.04m x 3.18m)

OUTSIDE

Front & Rear Gardens
 Driveway

Ground Floor
 Approx. 119.4 sq. metres (1285.1 sq. feet)



Call Ashford - 01233 639531 ■ wardsofkent.co.uk

■ Legal advice should be taken to verify fixtures/fittings, planning, alterations and/or lease details
 ■ Through a Homewise Home For Life Plan people aged 60+ can secure this property for up to 59% less, by purchasing a Lifetime Lease.

■ Appliances & services are untested, dimensions are approximate and floor plans are not to scale