



Price
£275,000

Freehold

2x  1x  2x 

**The Street, Appledore,
Ashford, Kent, TN26**

OVER 60?

Secure this property
for up to **59% less!**

Wards
Helping you move forwards



Main features

- Set in the picturesque village of Hothfield
- Spacious lounge and dining room
- Benefitting from a driveway and large outbuilding
- Plenty of Potential to create a charming home
- Vast sunny rear garden

Accommodation

GROUND FLOOR

Lounge: 13'3 x 12'1 (4.04m x 3.69m)
Dining Room: 13'6 x 9'2 (4.12m x 2.80m)
Kitchen: 9'6 x 7'3 (2.90m x 2.21m)
Wet Room

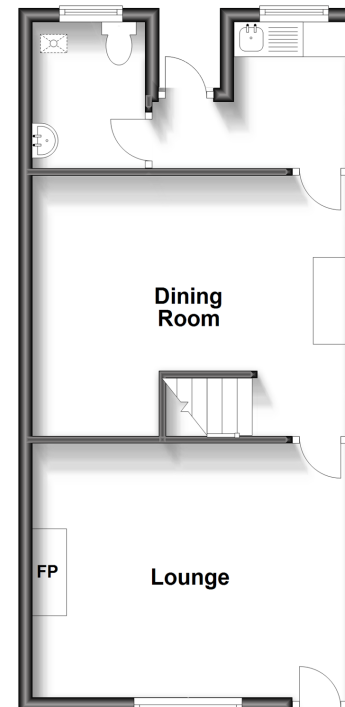
FIRST FLOOR

Landing
Bedroom 1: 13'4 x 12'4 (4.07m x 3.76m)
Bedroom 2: 14'7 x 9'5 (4.45m x 2.87m)

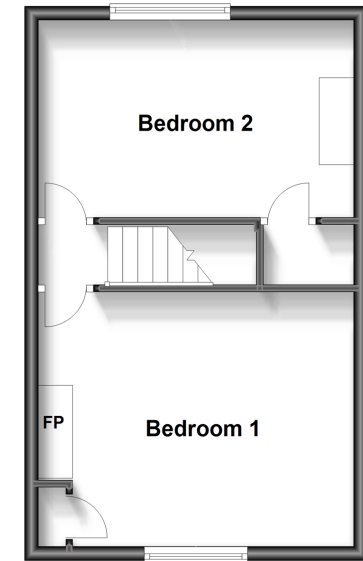
OUTSIDE

Outbuildings
Front & Rear Gardens
Driveway

Ground Floor
Approx. 43.0 sq. metres (462.6 sq. feet)



First Floor
Approx. 34.6 sq. metres (372.6 sq. feet)



Call Ashford - 01233 639531 ■ wardsof Kent.co.uk

■ Legal advice should be taken to verify fixtures/fittings, planning, alterations and/or lease details
■ Through a Homewise Home For Life Plan people aged 60+ can secure this property for up to 59% less, by purchasing a Lifetime Lease.

■ Appliances & services are untested, dimensions are approximate and floor plans are not to scale



12242152/20231014/MB/GA