



Guide Price
£250,000

Freehold

2x  2x  1x 

**Broadview Close,
Ashford, Kent, TN25**

OVER 60?

Secure this property
for up to **59% less!**

Wards
Helping you move forwards



Main features

- Off road-parking to the front of the property
- Ideal first-time purchase or investment
- Situated within close proximity to amenities
- Excellent transport links to London via M20
- Private low maintenance rear garden

Accommodation

GROUND FLOOR

Hall
Cloakroom
Kitchen: 9'7 x 7'3 (2.92m x 2.21m)
Lounge: 14'8 x 11'5 (4.47m x 3.48m)

FIRST FLOOR

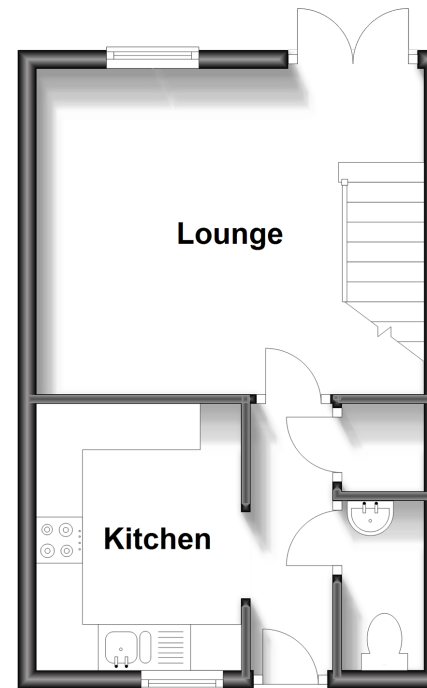
Landing
Bedroom 1: 11'9 x 10'6 (3.58m x 3.20m)
En-Suite Shower Room
Bedroom 2: 9'11 x 7'11 (3.02m x 2.41m)
Bathroom

OUTSIDE

Rear Garden
Allocated Parking

Ground Floor

Approx. 27.4 sq. metres (294.9 sq. feet)



First Floor

Approx. 27.4 sq. metres (294.9 sq. feet)



Call Ashford - 01233 639531 ■ wardsofkent.co.uk

- Legal advice should be taken to verify fixtures/fittings, planning, alterations and/or lease details
- Through a Homewise Home For Life Plan people aged 60+ can secure this property for up to 59% less, by purchasing a Lifetime Lease.

- Appliances & services are untested, dimensions are approximate and floor plans are not to scale



12242165/20230725/GA/GA