



Price
£220,000

Freehold

3x  1x  1x 

**Clockhouse, Ashford,
Kent, TN23**

OVER 60?

Secure this property
for up to **59% less!**

Wards
Helping you move forwards



Main features

- **Benefitting from a garage and driveway**
- **Ideal opportunity to make it your own**
- **Spacious lounge/diner**
- **Walking distance to Victoria park**
- **Close to amenities and transport links**

Accommodation

GROUND FLOOR

Hallway
 Kitchen: 13'8 x 7'9 (4.17m x 2.36m)
 Lounge/Diner: 16'8 x 14'5 (5.08m x 4.40m)
 Conservatory: 14'8 x 5'6 (4.47m x 1.68m)

FIRST FLOOR

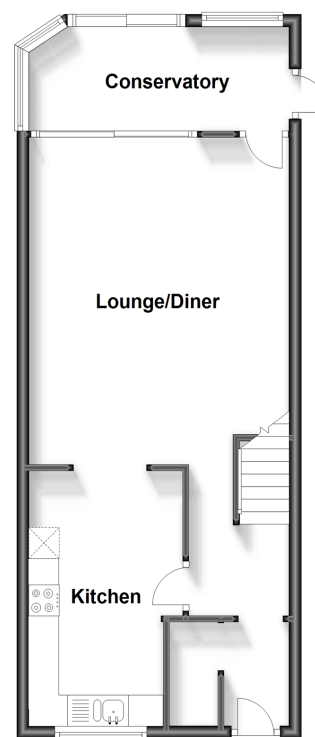
Landing
 Bedroom 3: 8'5 x 5'9 (2.57m x 1.75m)
 Bedroom 2: 12'5 x 8'2 (3.79m x 2.49m)
 Bedroom 1: 12'7 x 8'0 (3.84m x 2.44m)
 Bathroom

OUTSIDE

Front & Rear Gardens
 Garage & Driveway

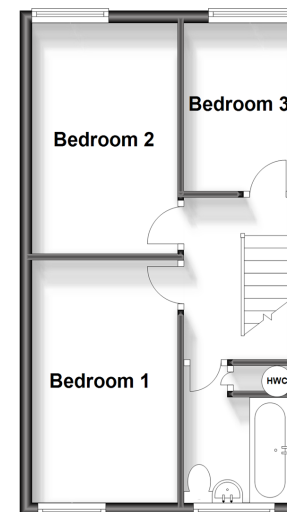
Ground Floor

Approx. 48.0 sq. metres (516.8 sq. feet)



First Floor

Approx. 33.0 sq. metres (355.7 sq. feet)



Call Ashford - 01233 639531 ■ wardsofkent.co.uk

- Legal advice should be taken to verify fixtures/fittings, planning, alterations and/or lease details
- Through a Homewise Home For Life Plan people aged 60+ can secure this property for up to 59% less, by purchasing a Lifetime Lease.

- Appliances & services are untested, dimensions are approximate and floor plans are not to scale