



Price
£160,000

Leasehold

1x  1x  1x 

**Loudon Court, Loudon
Way, Ashford, Kent,
TN23**

Wards
Helping you move forwards



Main features

- Chain-free
- Beautifully presented throughout after tasteful modernisation
- Assisted small development with a monthly service charge
- Quiet and safe location, backing onto a small park and pond area
- Outdoor courtyard area is perfect for those who enjoy being outside in the summer

Accommodation

GROUND FLOOR

Hallway

Bedroom: 10'4 x 9'7 (3.15m x 2.92m)

Shower Room

Lounge: 14'9 x 11'10 (4.50m x 3.61m)

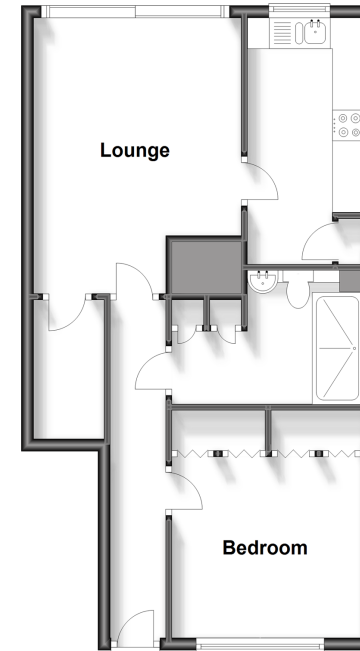
Kitchen: 13'8 x 6'1 (4.17m x 1.86m)

OUTSIDE

Courtyard Area

Ground Floor

Approx. 50.4 sq. metres (542.0 sq. feet)



Call Ashford - 01233 639531 ■ wardsofkennt.co.uk

■ Legal advice should be taken to verify fixtures/fittings, planning, alterations and/or lease details

■ Appliances & services are untested, dimensions are approximate and floor plans are not to scale