



Guide Price
£375,000

Freehold

3x  2x  1x 

**Hedgers Way,
Kingsnorth, Ashford,
Kent, TN23**

OVER 60?

Secure this property
for up to **59% less!**

Wards
Helping you move forwards



Ground Floor

Approx. 54.3 sq. metres (584.4 sq. feet)

Main features

- **Benefitting from a garage and off-road parking**
- **Immaculately presented, turn key ready**
- **Spacious bedrooms throughout the property**
- **Versatile converted garage with roller door**
- **Great location with amenities and schools on your doorstep**

Accommodation

GROUND FLOOR

Hallway
Kitchen: 10'5 x 9'3 (3.18m x 2.82m)
Cloakroom
Lounge: 17'2 x 13'7 (5.24m x 4.14m)

FIRST FLOOR

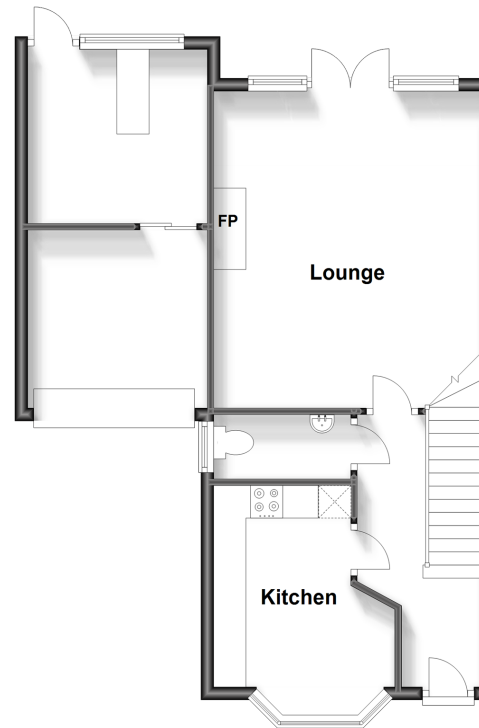
Landing
Bedroom 2: 11'5 x 10'9 (3.48m x 3.28m)
Bathroom
Bedroom 3: 13'4 x 7'3 (4.07m x 2.21m)

SECOND FLOOR

Landing
Bedroom 1: 19'0 x 9'11 (5.80m x 3.02m)
En-Suite Shower Room

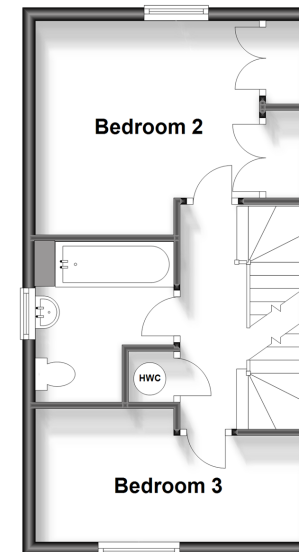
OUTSIDE

Front & Rear Gardens
Garage & Driveway



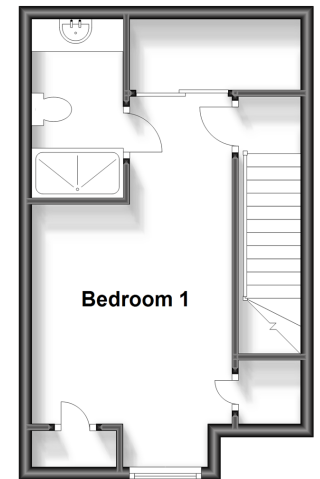
First Floor

Approx. 33.4 sq. metres (359.8 sq. feet)



Second Floor

Approx. 27.8 sq. metres (298.9 sq. feet)



Call Ashford - 01233 639531 ■ wardsofkent.co.uk

- Legal advice should be taken to verify fixtures/fittings, planning, alterations and/or lease details
- Through a Homewise Home For Life Plan people aged 60+ can secure this property for up to 59% less, by purchasing a Lifetime Lease.

- Appliances & services are untested, dimensions are approximate and floor plans are not to scale



12242212/20230701/MB/GA