

OVER 60?

Secure this property
for up to **59% less!**



Price

£900,000

Freehold

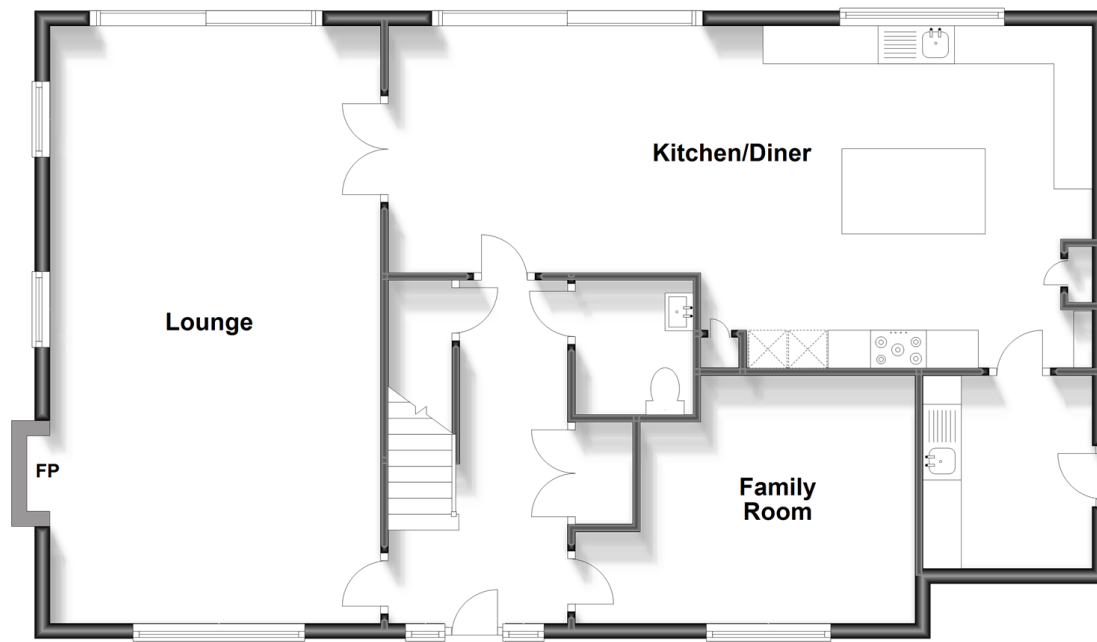
5x  3x  2x 

**Chequers Green, Shadoxhurst, Ashford,
Kent, TN26**

Wards
Helping you move forwards

Ground Floor

Approx. 106.0 sq. metres (1141.5 sq. feet)



First Floor

Approx. 106.0 sq. metres (1141.5 sq. feet)



Accommodation

GROUND FLOOR

Hallway

Cloakroom

Family Room: 14'8 x 10'8 (4.47m x 3.25m)

Lounge: 24'7 x 14'4 (7.50m x 4.37m)

Kitchen/Diner: 30'3 x 14'8 (9.23m x 4.47m)

Utility Room: 8'5 x 6'11 (2.57m x 2.11m)

FIRST FLOOR

Landing

Bedroom 2: 14'4 x 8'11 (4.37m x 2.72m)

En-Suite Shower Room

Bedroom 1: 13'5 x 10'4 (4.09m x 3.15m)

En-Suite Shower Room

Bedroom 5: 10'2 x 7'10 (3.10m x 2.39m)

Bedroom 4: 10'4 x 8'10 (3.15m x 2.69m)

Bathroom

Bedroom 3: 15'8 x 10'10 (4.78m x 3.30m)

OUTSIDE

Double Garage & Driveway

Front & Rear Gardens



Main features

- Bespoke Roma kitchen with solid oak flooring and integrated NEFF appliances, along with Quartz and Oak worktops and triple-glazing
- High speed broadband with CAT6 cabling
- Detached double garage with EV charging point and electric roller door and driveway
- A large rear garden lawn with twin patio areas to bask in the summer months
- Evenly proportioned double bedrooms



Nearest Schools

Primary Schools: Chilmington Green Primary School 2.3 miles, Kingsnorth C of E Primary 2.9 miles. Secondary Schools: Highworth Grammar School for Girls 3.7 miles, Ashford School 3.8 miles.



Transport Information

Train Stations: Hamstreet 3.2 miles, Ashford International 3.4 miles, Pluckley 4.5 miles



Address

Chequers Green, Shadoxhurst, Ashford, Kent, TN26



Directions

For directions to this property please contact us.



Wards
Helping you move forwards

Call Ashford Branch 01233 639531 ■ wardsofkent.co.uk



■ Legal advice should be taken to verify fixtures/fittings, planning, alterations and/or lease details ■ Appliances & services are untested, dimensions are approximate and floor plans are not to scale
■ Through a Homewise Home For Life Plan people aged 60+ can secure this property for up to 59% less, by purchasing a Lifetime Lease.



12242254/20230729/MB/NF